

SPILSBY EXPLORER

WINTER 2019



Spilsby Town Council

Contents

Mayors Message	Page 4
Message from Spilsby PCSO	Page 6
Message from East Lindsey Environmental Crime Team	Page 7
Fire Station Report	Page 8
What's Your Bedtime Routine?	Page 9
Good Neighbor Scheme	Page 10
What's on at the Sessions House	Page 11
What's on at Christmas in Spilsby	Page 14
Useful numbers	Page 15
A Brief History of Spilsby	Page 16
Spilsby Arts and Culture	Page 17
Spilsby and Hundley Walkers are Welcome	Page 19
Spilsby Town FC.	Page 19
Gardener's Corner	Page 20
Puzzle Corner	Page 22
Recipe to keep	Page 23



Sweet Vanilla

**Dennetts Ice Cream and Traditional
Sweets**



Sweet Vanilla Crafts

Fabric, patterns & haberdashery.



Sweet Vanilla, 7 Cornhill, Spilsby, PE23 5JP, 07483123580

SPILSBY GRAMMAR SCHOOL FOUNDATION

**CURRENTLY HAS FUNDS AVAILABLE TO ASSIST
FORMER PUPILS OF**

KING EDWARD VI ACADEMY

**(formerly KING EDWARD VI HUMANITIES
COLLEGE and KING EDWARD VI SCHOOL,
SPILSBY) with their exceptional costs if they are
presently in further/higher education or training
and are over 18 and under 25 years of age on
31st December 2019.**

**Applications from former pupils of Spilsby, Great
Steeping, Halton Holegate, Partney & Toynton
Primary Schools who went elsewhere for
secondary education will also be considered.**

**To see further details and to download a copy of the
Criteria and Application Form go to
www.spilsbygfsf.org.uk**

**APPLICATIONS must be received by
12 noon on MONDAY 27th JANUARY 2020**

Mayors Message (Cllr Terry Taylor)

First of all, I do hope you are all enjoying the Spilsby Explorer Newsletter. Over time the council has explored many different ways of communicating with you, but since the first publication of the Spilsby Explorer, the feed-back we have received from you has been so positive, it has convinced us to continue producing it. We do feel that improvements can be made as we go along and so we would like you to help us do that, by making suggestions for new features and if possible, get personally involved with the production of the newsletter. (Anyone who is interested, can telephone (01790) 753189, email spilsbytowncouncil@btconnect.com, or visit the council office and speak to Bonny or Karen)

There has been lots happening since the last edition of the Spilsby Explorer. A team of councillors and residents have completed Community Speed Watch (CSW) training by the Lincolnshire Road Safety Partnership, and using the necessary equipment purchased by the council, the team have been carrying out regular speed monitoring sessions and the amount of drivers breaking the speed limit is alarming, so it is hoped, that regular monitoring throughout the year, will send a message to speeding drivers and make our roads in and around Spilsby safer for everyone. If anyone is interested in Joining the CSW team please contact the Town Clerk.

News that Lloyds Bank, the only functioning bank left in Spilsby, is to close in early November, has come as a big disappointment, the town council have made representations to Lloyds, but they have made it clear that the decision has been made to close the branch and they will consider providing a mobile bank service once a week. The council is eager to connect with other interested individuals and bodies to pursue alternative methods of banking services for Spilsby and hope that we can update you of any progress with this over the coming weeks. A pop in morning took place on Tuesday 5th November in the community hub of the library in Spilsby Co-op. Residents were able to speak to representatives of Lloyds bank, the post office and ELDC portfolio holder for older people to discuss the impact on the closure of Lloyds bank.



I continue to enjoy my mayoral year and it has been a pleasure to attend so many excellent events. The 'Picnic in the Park' event was excellent, so a big thank you to the NCS group for hosting it and the raffle raised an amazing £360 for the Mayors Charities.

During early September the councils Civic Service took place at the Methodist Chapel, many thanks to the Reverend Sue and

Pictured at the pop in morning.



her congregation for making us all welcome and to our councillors and all the civics who attended. I must say a huge thank you to Bonny, Karen and Bonny's husband Geoff for organising the food, which was brilliant and the councillors who helped to set out the Hall and clear away afterwards, they did a great job.

On the 10th September, I visited the Grubby Knees Theatre Group, which is one of my chosen charities and presented them with a cheque for £300, they were delighted and made me very welcome.

On 13th September I met with Gay Norman and David Bruce at the White Hart for the launch of their Charity Walk for people with mental health, which will take place on the 13th September 2020. They are looking for sponsors, for each day that they walk.



On the 14th September I attended the Masonic Lodge open day, I met the Grand Master and chatted to visitors attending the event who said they found it very enlightening and enjoyable. From there I went next door to the Christian Fellowship Church, where they were hosting an Art Exhibition, I met the main exhibiter, his art is excellent and he was delighted that so many visitors had attended and that some had bought pictures.

***Kind Regards.
Terry.***

GET YOUR BUSINESS NOTICED

Take advantage of our Advertising packages in the Spilsby Explorer

Distributed quarterly to households and businesses in Spilsby

£45 for a full page per issue, £25 for half page per issue and £15 per quarter page per issue

Trade, name and contact details added to what's on pages only £5 per issue

REDUCED RATES FOR YEARLY ADVERTISING

deputyspilsbytc@btconnect.com

[TEL: 01790 753189](tel:01790753189)

Message from Teresa Key Police, PCSO, Spilsby

Please be aware there are still a lot of people getting caught out from scam emails and calls. If you receive any emails claiming you have a refund from your Gas Company or any service provider, be mindful it is more than likely a scam, the scammers are using the company's logos so the emails look authentic.

If you receive such an email claiming to be from your service provider, please **DO NOT** click on the link or call the telephone number provided.

You should have the correct telephone/contact details for your service provider, on any official documents you have received from them in the past, so use this to contact them and check.

Also please note, the police will **NEVER** call you and suggest you help them by withdrawing money from your account, this will most definitely be a scam and you should call 101 right away with as much information you have noted.

Please **DO NOT** give out your bank details to anyone requesting them over the phone or by email.

Please keep your details safe and do not give them out to anyone.

Helpful information. Look on the police website, Police.uk and click on Find Your Neighbourhood, this will tell you what is happening in your area. You can find the latest news and lots of helpful information and advice on this site.

Useful contacts and organisations

To contact or find your local Neighbourhood Policing Team

Tel: 101

or check www.police.uk

To obtain information on how to join a Neighbourhood Watch Scheme

Visit the website: www.lincolnshireneighbourhoodwatch.co.uk

Or ring 01522 558399

Action Fraud

To report scams and Internet security issues.

Ring 0300 123 2040

or visit the website: www.actionfraud.police.uk

Crimestoppers

A national charity that enables members of the public to give confidential information relating to crimes and criminal activity.

Call: 0800 555 111

or visit the website: www.crimestoppers-uk.org

Victim Support

A National charity that offers help and advice to victims of crime.

Call: 0845 30 30 900

or visit the website: www.victimsupport.org

Rogue Traders/Doorstep callers

If you feel you are being targeted by unscrupulous tradesmen and need advice and support:

call: Lincolnshire Police on Tel: 101

Or Trading Standards (Lincolnshire County Council) on 01522 782341

Email: tradingstandards@lincolnshire.gov.uk

Priority Services Register

A scheme where you can register with your utility companies and they will give you a password if they need to make a personal visit to you

Home Heat Helpline tel: 0800 33 66 99 (freephone)

or visit the website: www.homeheathelpline.org.uk

Telephone Preference Service (TPS)

Register with the TPS to remove yourself from mailing lists

visit the website: www.tpsonline.org.uk

or ring: 0845 070 0707

Company Registrations

To check if a company is registered and legal visit the website:

www.companieshouse.gov.uk

Lost/Stolen Horses and equines

To register a lost/stolen horse

Phone: 0870 870 7107

or visit the website: www.stolenhorseregister.com

Lost/stolen Dogs and Pets

To register a lost/stolen dog/pet:

Tel: 0844 800 3220

or visit the website: www.doglost.co.uk

ELDC - Environmental Crime Team

The Environmental Crime Team at East Lindsey District Council deal with several different areas including Caravan Site Licensing, Scrap Metal Licensing and Commercial Waste Arrangements, as well as Environmental Crime, which covers a whole range of issues in itself. Some of these include littering, fly tipping and dog fouling. With these types of cases, the team rely on members of the public witnessing these incidents and reporting them. They can be reported online at www.e-lindsey.gov.uk, then click 'Report'. Alternatively, it can be reported over the phone by contacting 01507 601111. As part of the Environmental Crime Team, there are two Environmental Crime Officers (ECO's); one covers the northern area of the district, and one covers the south. Their main role is to monitor the PSPO, but they also patrol 'hot spot' areas for ongoing issues with dog fouling and littering. They can issue Fixed Penalty notices for any offences that they witness.'

How is the town's fire station and crew performing?

Firstly, the town should be proud of their station and the crew that operate from it. Also, there are 2 groups of people in the community that should be applauded because of their 'behind the scenes' support to the crew that means we have this professional group of people serving the community. They are the employers that allow their staff to drop everything at a moment's notice and respond to the station and also the families of the Fire Fighters; who will often have to deal with their partners, dads and brothers missing meals, family functions and disturb them in the night when they either leave or come home in the early hours.

So how has the station performed so far since April?

The crew have been available 99.95% of the time

The crew have reached all incidents within timescales

The crew are mobile to an incident from their pagers activating in an average time of 3 minutes 41 seconds

They responded to the following number of call outs

April – 9 calls

May – 9 calls

June – 26 calls, 14 directly related to the flooding

July – 13 calls

August – 22 calls

Upcoming community fire safety events:

14th – 20th October Candle Safety Week

16th October National Burns Awareness Day

21st Student Fire Safety Week

31st October Hallowe'en

5th November Bonfire Night

18th – 24th November Electrical Fire Safety Week

If you have any fire safety concerns in your home please contact the team at

Grantham Fire Station on 01476 565441

If you want to join the crew at Spilsby please ring the recruitment line on 0800 3580 204

WHAT'S YOUR BEDTIME ROUTINE?

LINCOLNSHIRE FIRE AND RESCUE'S TOP TIPS FOR A SAFE NIGHTS SLEEP



Keep doors closed.



Make sure fires are put out before going to sleep.



Don't use washing machines or tumble dryers when you are asleep.



Make a family escape plan.



Turn off heaters.



Turn off and unplug non-essential electricals.



Make sure cigarettes and candles are put right out.

Lincolnshire
COUNTY COUNCIL
Working for a better future

NEED HELP?

We all need help at times. The Spilsby Good Neighbour Scheme might be able to help if you live in the PE23 postcode area and are:

- An older person
- Disabled
- In need due to illness, injury or following hospitalisation
- Lonely

THE SERVICE IS FREE!

Here are some examples of what we can do:

- Shopping and errands
- Collecting prescriptions
- Minor indoor repairs and DIY, including changing light bulbs, hanging curtains, moving furniture
- Local lifts
- Filling in forms (non-legal)
- Light gardening
- Dog walking/help with pets

But please note that the scheme is not intended as a replacement for paid labour, emergency, nursing or community services.

Spilsby Good Neighbour Scheme is organised and run by local volunteers who are DBS Checked and trained in Safeguarding, Confidentiality and Data Protection

You can help us by:

- Volunteering
- Joining the committee
- Coming to our coffee mornings on the third Friday of every month in the Franklin Hall, Spilsby – Next one is on 15th November at 10.30 am
- Making a donation
- Supporting us when you see us at local events
- Spreading the word!

If you think we can help you, if you are not sure if we can help you, if you think you can help us, give us a call.

07716 127186



The Sessions House



Church Street, Spilsby, PE23 5DY

What's On

*Licensed
Bar*

*Venue Hire
Available*

OCTOBER

Thursday 31st 7pm - Family Halloween Pumpkin Party

NOVEMBER

- Friday 1st 7.30pm - LIVE MUSIC Acoustic Music Night
- Friday 8th 8pm - Poetry Night
- Friday 15th 8pm - LIVE MUSIC Music Jam with Mike Wisdom
- Saturday 16th 8pm - LIVE MUSIC Bella Gaffney (support - Homity)
- Friday 22nd 8pm - LIVE MUSIC Horncastle Ukulele Group & Jonathan Someone
- Saturday 23rd - LIVE MUSIC Bill Kibby Jazz Trio

DECEMBER

- Friday 6th 7.30pm - LIVE MUSIC Acoustic Music Night
- Saturday 7th 8pm - LIVE MUSIC Minnie Birch (support - Siren)
- Friday 13th 8pm - Poetry Night
- Thursday 12th 7.30pm - LIVE MUSIC - JAZZ
- Friday 20th 8pm - LIVE MUSIC Music Jam with Mike Wisdom
- Saturday 21st 8pm - Christmas Party
- Tuesday 31st 8pm - New Years Chill - celebrate with us quietly!

TUESDAYS from 5pm- Grubby Knees Kids & Youth Theatre

www.thesessionshouse.org.uk

All events help support the Spilsby Sessions House Restoration Project

01790 752936

info@spilsbytheatre.com

**Outdoor Market
Street Food
Puppet Show
Local Choirs
Silver Band
Visit from Santa!**



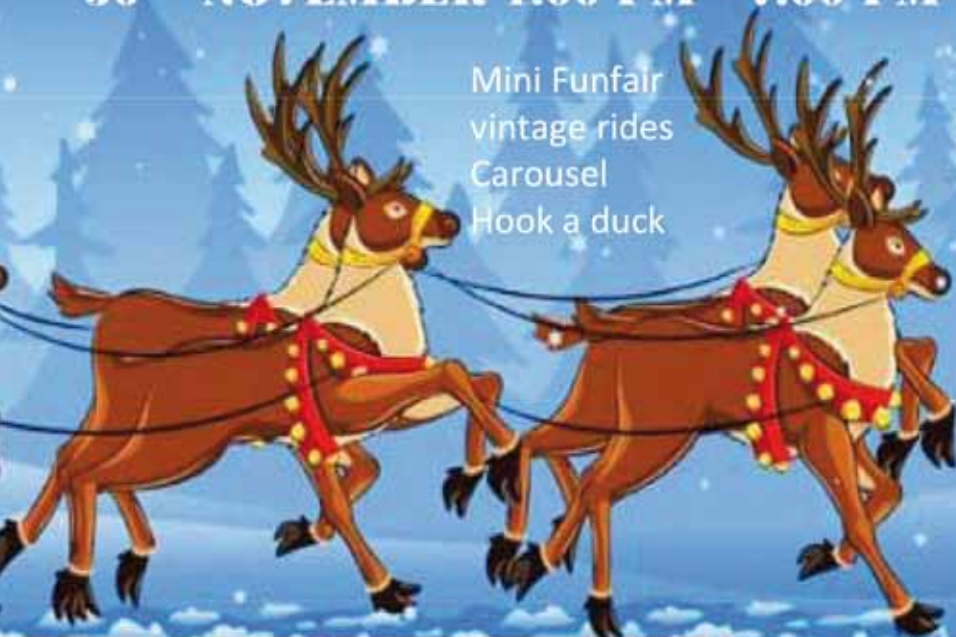
Free parking in the Ro

**SPILSBY TOWN COUNCIL PRESENTS TO
YOU IN ASSOCIATION WITH SPILSBY
FESTIVITIES COMMITTEE**

**A SLEIGH RIDE THROUGH SPILSBY
CHRISTMAS 2019**

30TH NOVEMBER 1.00 PM – 7.00 PM

Mini Funfair
vintage rides
Carousel
Hook a duck



bin Hood car park

WHAT'S ON AT CHRISTMAS

FRANKLIN HALL

FLIX IN THE STIX December 15th 2pm Spilsby Franklin Hall

CRACKER DAY SAT 7TH DECEMBER

NEW LIFE CENTRE

CHRISTMAS CAROL CONCERT SUNDAY 22ND DECEMBER 6PM

CHRISTMAS CAROL CONCERT SUNDAY 22ND DECEMBER 6PM

SPILSBY METHODIST CHAPEL

Sunday 8th December 10.30am Service of Holy Communion 8th December 5pm Community Carol Service which includes items by Spilsby Primary School Choir and a visit from Father Christmas

Christmas Tree Festival Weekend 13th to 16th December to be opened by the Mayor Friday 13th at 6.30pm

Friday 13th December Christmas Tree Festival begins at 6.30pm with the Spilsby, Alford, Skegness Scouts Carol Service. Followed by seasonal refreshments. Chapel open for viewing until 9pm

Saturday 14th Christmas Tree Festival Church Open 10am to 4pm including refreshments and activities for children

Sunday 15th December 10.30am Morning Service. Chapel owing for viewing and refreshments 12noon to 4pm

Monday 16th December 10.45am to 11.15am Shoppers Service. Chapel open for viewing and refreshments until 1pm

Sunday 22nd December 10.30am Carol Service

Wednesday 25th December 9.30am Christmas Day Service

CHRISTMAS SERVICES FOR ST JAMES

Sunday 22 December	9.30am	Carol Service
Christmas Eve	3.30pm	Christingle and Blessing of the Crib Service
Christmas Eve	11.30pm	Midnight Mass
Sunday 29 December	10.00am	Deanery Eucharist



FRANKLIN HALL - SPILSBY

A COMMUNITY HALL (REGISTERED CHARITY), THE PERFECT PLACE TO HOST SOCIAL AND BUSINESS EVENTS IN THE HEART OF SPILSBY

MAIN HALL

FOR LARGER FUNCTIONS AND ACTIVITIES UP TO 300 PEOPLE. IDEAL FOR COMMUNITY, CHARITY AND COMMERCIAL EVENTS, CLUBS, CLASSES, SPORTS, WEDDING RECEPTIONS AND PARTIES ETC
LARGER MEETINGS, PULL DOWN SCREEN, STAGE AND MICROPHONES AVAILABLE

CONFERENCE ROOM

OFFERS A MEETING ROOM/SMALLER FUNCTION ROOM FOR UP TO 50 PEOPLE. PULL DOWN SCREEN AND FREE WIFI OFFERING A FRIENDLY AND PROFESSIONAL ENVIRONMENT.

KITCHEN/BAR AND LOUNGE

IDEAL SOCIABLE SPACE TO LINK TO THE ABOVE ROOMS AND ALSO IDEAL FOR SMALLER DINING EVENTS (E.G. COFFEE MORNINGS, LUNCH GROUPS).

HALL MANAGER'S OFFICE GENERALLY OPEN TUESDAYS 11.15 TO 2.15 AND THURSDAYS 9.30 TO 12.30.

TEL 01790 752913 EMAIL: spilsbyfranklinhall@btconnect.com

PHOTOS AND ONLINE EVENTS DIARY ARE AVAILABLE BY VISITING: SPILSBY.INFO/FRANKLINHALL

Useful Numbers

Spilsby Primary Academy	01790 752503
King Edward VI Academy	01790 753260
Toynton All Saints Primary School	01790 752242
Partney C of E Aided Primary School	01790 753319
Eresby School	01790 752411
Woodlands Academy	01790 753902
Buttons Day Nursery	01790 755647
Spilsby Playgroup	07747888350
Spilsby Children's Centre	01790 753451
Spilsby Surgery	01790 378005
Grace Swan Health Clinic	01790 752374
District Nurses	01790 752434
Spilsby Dental Surgery	01790 753243
Spilsby SureStart (Children's Centre)	01790 753451
NHS Urgent Care	111
Spilsby Town Council	01790 753189
East Lindsey District Council	01507 601111
Lincolnshire County Council	01522 552222
Spilsby Children's Centre	01790 753451
Waterloo housing enquiries	0333 200 7304
Lincs Rural Housing Association	01790 754219
Lincolnshire Police (Emergency)	999
Lincolnshire Police (Non-Emergency)	101
Lincolnshire Police (Spilsby Police Station)	01790 752222
Lincolnshire Police (Neighbourhood Policing Team)	0300 111 0300

Miscellaneous Telephone Number

Franklin Hall	01790 752913
---------------	--------------

A Brief History of Spilsby



Spilsby has a long and well documented history. Its name is thought to originate from Spillir the Dane who owned a 'by' or settlement here.

Spilsby was a stopping place for the Royal Mail in the 18th and 19th centuries and obtained a branch railway line in 1868 although this closed in 1958.

For many centuries, the town's history revolved around the Willoughby family, who lived at Eresby Hall on the

southern approach to Spilsby. This was originally a monastery but by 1276 was fortified with turrets, walls and a moat. The Willoughbys were prominent on battlefields throughout the Middle Ages but despite their high profile abroad, remained involved in Spilsby as Lords of the manor. The King Edward VI Grammar School was founded by the Willoughbys in 1550. In 1302, Sir William of Willoughby obtained a market charter from Edward III. The town has been a thriving rural market town ever since.

The medieval parish church of St James was founded in 1348. Originally built of greenstone, it was restored and extended in 1879. It contains the Willoughby family crypt at the east end and memorials to the arctic explorer Sir John Franklin and his family at the west end. On the opposite side of Church Street is the terraced façade of the former grammar school and Spilsby High School. The building that stands behind it was built in 1776 and extended in 1826.

At the east end of the Market area stands Spilsby Methodist Church. This chapel, built in 1877-8 by Charles Bell, is flanked by the North Manse and South Manse, the buildings standing gable end on to the street. Also at the east end stands the market cross, known as the Buttercross.

At the west end is the former town hall. In front stands the statue to Sir John Franklin. Another interesting listed building at the west end is the White Hart Hotel on the Cornhill, built in the 17th century and altered in the 18th and 19th centuries. Across the market place is the Terrace, a fine example of 18th century houses built for prosperous merchants in the town. In the middle of the market area is a row of houses and shops, largely built in the 19th and 20th centuries.

Although it is the smallest of East Lindsey's market towns, there are some 34 listed buildings in its conservation area. Most of the town centre still adheres to the mediaeval street plan of four streets uniting in the extended market place.

Further west along Church Street, past the church, stands Spilsby Theatre which was formerly the court house and police station. This is a large and dramatic civic building built in 1824 by Henry Kendall and is unusual with its Greek temple front. Behind this imposing facade was the House of Correction extending back as far as Pooles Lane. The prison itself only survived for 50 years. In 1984 the building became a theatre but in 2015 it was placed on the 'Theatres at Risk Register'. A Local community organisation is now fundraising for the building's restoration.

Further west along Church Street, past the church, stands Spilsby Theatre which was formerly the court house. This is a large and dramatic civic building built in 1824 by Henry Kendall and is unusual with its Greek temple front. Behind this imposing façade was the House of Correction extending back as far as Pooles Lane. The prison itself only survived for 50 years. The court house and police station were in use until 1984 and the building is now a theatre which is currently being renovated.

Spilsby Arts & Culture



From youth theatre groups to homegrown talent touring America, Spilsby is creating more than you might imagine. Indeed, if you are looking for a good night out or something creative to participate in, Spilsby has it all.

The first Friday of the month is a particularly busy night in Spilsby with two of the town's most popular regular events taking place: The Community Cinema at Franklin Hall and Acoustic Music Night at the Sessions House.

Spilsby's pubs The White Hart, The Nelson Butt, The Red Lion and The

George often host bands and live music. The Hundleby Inn recently held a murder mystery night written and performed by a local group.

Spilsby's Churches also put on concerts during the year.

Spilsby's Sessions House continues to hold a wide range of events including kids and youth theatre classes, live music, poetry evenings, stand-up comedy, theatre and more.

At the Franklin Hall you'll find Cinema and Zumba dance classes. At the Recreation Ground (Spilsby Pavilion) there's more Zumba and the brilliant Pirouette School of Dance (for age 3 to adults).

Several annual Spilsby events have been growing over the last few years. This year's 'Christmas Lights Switch On' event will feature a community stage with a variety of performances from local groups. Spilsby Light Night, funded by Arts Council England, was launched in March 2019 and proved to be a success. Plans are in place for it to continue.

The Halloween Pumpkin Party at the Sessions House is another family event that has drawn crowds. SLAPS, Spilsby's pantomime society, are doing really well; following on from the success of last years 'Cinderella' they have just cast their next production 'Dick Whittington'.

Spilsby has a growing creative community producing plenty of talent. Spilsby's Grubby Knees Community Theatre and musician Shauna-Lea Dawson both performed at this year's SO Festival, one of the UK's largest annual outdoor arts festivals. This brilliant event on Spilsby's doorstep, just 20 minutes down the road, takes place in August and now features a community stage alongside international acts. Local musician Sophia Woodcraft and her band played Outfields and Equinox festivals this summer. Topping it all, when it comes to homegrown talent, is Jack Broadbent. Jack, a Blues musician who grew up in Spilsby, has just completed a tour of the USA and is the support act for Ronnie Wood of the Rolling Stones at the Shepherds Bush Empire, London and Birmingham Symphony Hall in November 2019.

For Spilsby's artists and venues to continue to thrive they need your support. The good news is, it's a well-known fact that going out to cultural events is good for your health and in Spilsby you don't have to pay London prices! So, there's every reason to turn off the telly, ignore the internet and enjoy what your community has to offer for an evening or two.

If you are involved in arts/cultural activities in Spilsby and would like a mention in future issues of Spilsby Explorer please write to bruce@spilsbytheatre.com

Spilsby & District Wood carvers

Wood carving for Beginners

The Pavilion, Ancaster Ave, Spilsby, E23 5HL

2nd Monday
&
4th Wednesday
10am to 3pm

Whether you are an experienced carver or have always wanted to try your hand at wood carving,

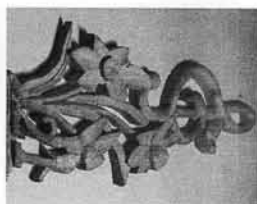
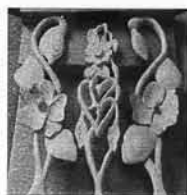
You need no previous experience you do not need to be good at art.

The group provides help and encouragement to those wishing to learn,

For more info

Tel: 07487 318022

E-mail s.dwoodcarvers@gmail.com





Spilsby and Hundleby Walkers are

Welcome was formed in January 2018, following the Town Clerk's attendance at a Tourism Forum where she heard about this nationwide organisation that seeks to boost local tourism by encouraging walkers to visit for walking holidays or short breaks. Stef Round, a keen walker and local resident 'volunteered' to start a local group.

She decided to combine Spilsby with neighbouring Hundleby as each has something to offer walkers in terms of accommodation, cafes and pubs, parking, WC's, transport links, and of course footpaths. Once a Steering Group had been formed, application was made to join the Walkers are Welcome network and this was granted in April 2018. Since then the group has looked after local public footpaths and stiles, reporting any problems to Lincolnshire County Council, and has offered monthly walks, open to everyone. These have ranged from a 1.5 mile walk round Historic Hundleby, followed by tea and cakes, to a 10-mile hike around the local villages as part of the Lincolnshire Wolds Walking Festival. In addition, the group has produced a leaflet entitled "On the Trail of Sir John Franklin", leading walkers around Spilsby to discover the many places linked with the Arctic explorer. And then in May 2019, a former cross-country route known as "The Franklin Way" was resurrected by the group, with a new explanatory leaflet and waymarkers to direct walkers on the 3.5-mile trail between Spilsby and Hundleby. Copies of both leaflets are available from the Franklin Hall. In 2019 alone, the group has walked well over 1,000 miles and welcomed nearly 300 walkers. If you are interested in joining any future walks, then please look at their website or facebook page: "Spilsbyandhundlebywalkersarewelcome."

f Spilsby Town FC f

Season 2018/19 proved to be one of the most successful ones for our town's football club which is also one of the oldest in the country after being founded in 1881. Playing in the Boston Premier League our local side won the league for the first time since 2003 by an impressive margin and with 4 games to spare this was also backed up by 2 cup victories resulting in a historic treble for the Magpies.

Riding on the back of this success the club has now re-introduced the reserve side in Division 3 for the current season this is to provide young players with a route to the first team all the way back from under 9's via Spilsby Junior FC

Expectations are once again high for our sides and the support from local businesses for sponsorship etc has been much appreciated. In-fact we would not be able to play without this help.

Town Council members and Football Club members can all agree that everybody working together and putting in the time and effort does bring success.



Gardener's Corner-

Top tips for Autumn



Planting, Preparation & Protection

Plant tulips and any other remaining bulbs for a good display in spring.

Sow overwintering broad beans outside under cloches.

Don't forget to net your brassicas or check the netting, those pigeons are still looking for a winter meal!

Plant garlic now so over-winter chilling encourages bulb formation.



Harvest parsnips after the first frosts as they will have sweetened which improves their flavor.

Start winter pruning any established apple and pear trees anytime from now and February. Don't prune plum trees as they will be susceptible to silver leaf fungus, wait until midsummer instead.

Be careful not to overwater plants as the winter approaches. Little and often is the key!

Collect and burn leaves from beneath roses to control black spot.

Tidy up strawberry plants - cut off any dead leaves and remove runners.

Cut a few stems of holly with berries for making Christmas garlands. It's early, but now's the time to do it, before the birds eat all the berries! Stand them in a bucket of water in a sheltered spot where birds can't take them!

Plant dormant currant bushes and raspberry canes now for a delicious home-grown crop.

Protect roses from windrock by pruning them by one-third to half their height. This will stop them swaying in strong wind and roots loosening.

Garden Maintenance

Raise up any pots or containers onto feet to prevent any water logging.



Clean the greenhouse and cold frame glass to maximise light levels.

Replace any broken glass and insulate with bubble wrap where necessary.

Install solar lights to brighten up the garden on dark nights.

Wash out seed trays and pots ready for spring sowing and clean and stack flowerpots.

Insulate outdoor containers from frost using bubble wrap held in place with garden twine.

As there becomes less to do, why not use this opportunity to build a raised bed to take the strenuous bending out of vegetable growing.

There's still time to aerate your lawn, you can either use a lawn aerator or insert a garden fork at regular intervals and lean it back slightly.

Clean out water butts and let the autumn rains refill them.

Use the last of the dry weather to paint sheds and fences with preservative before the winter arrives.

Don't forget to set your lawn mower to a higher cut-height for winter.

Winter Wildlife

Why not encourage hungry birds into your garden by investing in bird baths and bird feeders? Our feathered friends will keep pest numbers down and bring joy on a bleak winter's day.



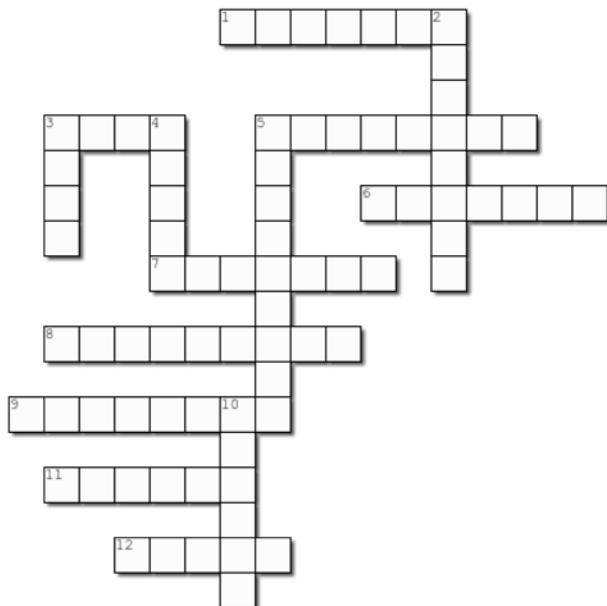
Give all your existing birdfeeders a good clean and inspect for damage.

Whilst tidying fallen leaves and twigs, don't be too tidy! Areas that are unkempt provide valuable shelter for wintering insects. Or how about making a wildlife hotel instead?

Don't forget to check your bonfire pile for hibernating hedgehogs!

2nd Spilsby Cubs Crossword

Complete the crossword puzzle below



Across

1. THE OLD COURTHOUSE
3. WHERE YOU GO FOR A PINT
5. OUR FAMOUS SON
6. ANIMALS AND CROPS
7. WHERE YOU GO TO LEARN
8. PEOPLE LIVING IN SPILSBY FORM THIS
9. PLACES OF WORSHIP
11. STAND STILL LIKE A
12. CAVEMEN USED THESE

Down

2. SOMEONE WHO DISCOVERS NEW PLACES
3. SWINGS AND SLIDES ARE HERE
4. WHERE YOU BUY THINGS
5. WHERE THINGS ARE MADE
10. AVENUE, SCHOOL AND HALL

The 2nd Spilsby Cubs chose words that they associate with Spilsby and with the help of their leaders have produced this crossword.

We hope you have fun completing it!

We have spaces available for children ages 6 – 14yrs.

Please email Gemma on gsl@2ndspilsby.org.uk



Tear and Share Stollen Spirals

Preparation time 30 min plus resting and cooling

Cooking time about 40 min.

Makes 12

Per spiral: 46-cals, 10g protein, 11g fat (3g saturates), 78g carbs (43g total sugars), 3g fibre

Ingredients

- Finely grated zest and juice of 1 orange
- 100g (3½oz) dried cranberries
- 150g (5½oz) mix of raisins and sultanas
- 275ml (9½ fl oz) whole milk
- 50g (2oz) butter, chopped, plus extra to grease
- 550g (1¼lb) strong white bread flour, plus extra to dust
- 7g sachet fast-action dried yeast

- 75g (3oz) caster sugar
- 1tsp mixed spice
- 1 medium egg
- 400g (14oz) almond paste or marzipan
- 40g (1½oz) flaked almonds

TO DECORATE

- 100g (3½oz) icing sugar, sifted
- Juice ½ a small orange



1. Mix orange zest, juice and dried fruit in a bowl. Set aside until needed. Heat milk and butter in a small pan until butter melts. Leave to cool until just warm.
2. Meanwhile using a freestanding mixer fitted with a dough hook (or in a large bowl with a wooden spoon), mix flour, yeast, caster sugar, mixed spice and a pinch of fine salt. Whisk egg into milk mixture, add to the flour bowl and mix to bring together to a soft dough (if looking a little dry, add a splash more milk). Knead on medium speed if using a mixer, or tip on to a lightly floured surface and knead by hand until soft and springy – about 5-10 min.
3. Return dough to a lightly greased bowl, cover and leave in a warm place to rise until doubled in size, about 1½ hr.
4. Grease and line a 20.5cm x30.5cm (8 x 12in) roasting tin with baking parchment, then grease parchment. Lightly flour a work surface and roll out dough to a 28 x 38 cm (11 x 15in) rectangle. Lightly flour work surface again and roll out almond paste/marzipan to the same size. Brush dough lightly with water, then press on almond paste/marzipan rectangle. Scatter over dried fruit mixture (and any liquid) and almonds.
5. Roll up from a long edge and trim ends to neaten. Cut into 12 even slices and arrange, cut-side up, in a roasting tin. Cover with clingfilm and leave to rise again for 1hr.
6. Preheat oven to 180C (160C fan) gas mark 4. Bake buns for 35 min until golden. Leave to cool in tin for 5min, then lift on to a wire rack, using the parchment, to cool.
7. To serve, mix the icing sugar and orange juice to a thick drizzling consistency and drizzle over the stollen spirals and serve.

STORM UK SPILSBY

**MARTIAL ARTS CROSS TRAINING
FRANKLIN HALL, SPILSBY**

PROVEN BENEFITS OF MARTIAL ARTS

SELF DISCIPLINE – DEDICATION - FOCUS

RESPECT – FITNESS - CONFIDENCE

CORE STRENGTH - FLEXIBILITY

SELF DEFENCE – BALANCE - FRIENDSHIP

CONFIDENCE - INCREASED CONCENTRATION



MONDAYS

Mixed Class Age 7yrs-Adults
7pm – 8.30pm

WEDNESDAYS

SPILSBY LITTLE TORNADO'S Age 4-7yrs
5.30pm – 6.15pm
JUNIORS Age 7-14yrs
6.30pm – 7.30pm
SENIORS Age 14-Adult
7.45pm – 9pm



**HAVE YOU GOT WHAT IT TAKES?
IF YOU ARE INTERESTED IN JOINING ONE OF OUR
CLASSES WE MAY HAVE SPACES AVAILABLE IN
OUR JUNIOR AND SENIOR CLASSES!
YOUR FIRST TWO SESSIONS ARE FREE!**

TO JOIN:

PLEASE GET IN TOUCH

CHIEF INSTRUCTOR WAYNE PEARL

CONTACT OUR CLUB ADMIN GEMMA HOLLAND ON:

07506 363058 – 01790753594

stormukmartialarts@btinternet.com

www.stormukmartialarts.co.uk