

SPILSBY EXPLORER

SPRING 2022



Photograph by J Wood – Spilsby Resident.



SPILSBY TOWN COUNCIL

CONTENTS

MAYOR'S MESSAGE	3
SPILSBY TOWN COUNCIL HIERARCHY PLAN	4
SPILSBY TOWN COUNCIL MEETING DATES	4
SPILSBY TOWN COUNCIL COMMUNITY SPEED WATCH	5
LCC COUNTY COUNCILLOR	5
YOUR LOCAL COUNCIL – WHO DOES WHAT?	6
WOODLANDS ACADEMY	8
SPILSBY NEIGHBOURHOOD POLICING TEAM	10
LIVES NEWSLETTER	12
SPILSBY GOOD NEIGHBOUR SCHEME	14
COMMUNITY LIBRARY	15
AGE UK	18
FRIENDS OF SPILSBY	18
QUEENS JUBILEE – JOINT CHURCH SERVICE	18
LINCOLNSHIRE FIRE & RESCUE REPORT	20
SPILSBY CHRISTIAN FELLOWSHIP	20
LINCOLNSHIRE FIRE & RESCUE	22
CHURCH CLOCK – FUND UPDATE	26
USEFUL TELEPHONE NUMBERS	27

We would very much welcome any suggestions for future editions of the Spilsby Explorer. Please share any news articles. Most importantly please just get in touch; we would really love to hear from you.

The next edition will be published in the Summer 2022. If you would like to contribute please contact Spilsby Town Council.

E-mail: spilsbytowncouncil@btconnect.com

MAYOR'S MESSAGE

Welcome to this spring edition of the Spilsby Explorer.

My term as Mayor and Chair ends in May. The role of Mayor is both enjoyable and satisfying, disappointingly, Covid-19 has restricted this to a bare minimum, but fortunately, all the events that I have been involved with have been excellent. I have met so many wonderful local people and the work that community groups and individuals put in to make Spilsby what it is, is astounding!



Since the last edition of the Explorer, there has been much to report on. The Church wall that collapsed nearly four years ago has finally reached completion. It has been a huge drain on the Council's finances, but as it is the Council's responsibility, it has been a necessity. On behalf of the Council, I want to thank the contractors and the long-suffering tenants who have coped with restricted garden space and the noise of machinery, for their patience and support.

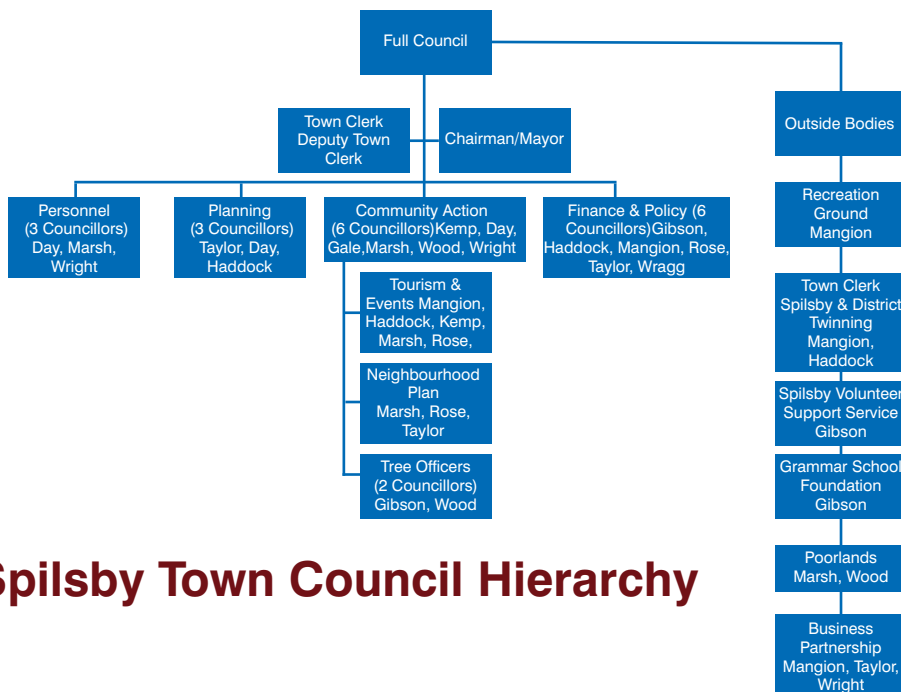
Now that Covid-19 restrictions are easing, local events are starting to take place. The Spilsby Light Night took place on Saturday, 26th March and what a great night it was. The whole event had a great atmosphere, was so well attended and a great fun night. A collection was taken during the event for the people of Ukraine and a huge thank you to everyone who contributed. There are many more events lined up for the summer, including the Bike Night and the Queen's Platinum Jubilee celebrations, which will include the Picnic in the Park event, so please look out for these and many others.

I must mention before I close, that our Town Clerk, Bonny Smith retired on 30th March, of course Bonny is well known by almost everyone in Spilsby. She has been a stalwart for the Council and we will all miss her. On behalf of the Council, I extend our thanks for her sterling service and wish her good health and happiness in her retirement. We do have a new Town Clerk, his name is Jack Sargent and he will be ably assisted by our current Deputy Clerk Ros Ford.

So, as my term as Mayor/Chair comes an end, I want to thank my fellow Councillors and our Clerks for supporting me and all of you Spilsby residents who make this town what it is, simply a wonderful place to live. It has been an honour and privilege to serve as Mayor and it will give me many great memories that will stay with me always. I will of course continue as a town councillor and look forward to supporting the newly appointed mayor after the May council meeting.

Best wishes to you all

Terry



Spilsby Town Council Hierarchy

SPILSBY TOWN COUNCIL DATES OF MEETINGS 2022-2023

All meetings to start at 7pm unless stated

FULL COUNCIL MEETINGS

26th May, 2022 (Annual Meeting)
23rd June, 2022
28th July, 2022
August Recess, 2022
22nd September, 2022
27th October, 2022
24th November, 2022
December Recess, 2022
26th January, 2023
23rd February, 2023
23rd March, 2023
Annual Town Meeting
to be notified

COMMUNITY ACTION COMMITTEE MEETINGS

7th July, 2022
6th October, 2022
20th January, 2023

FINANCE AND POLICIES COMMITTEE MEETINGS

9th June, 2022
13th October, 2022
12th January, 2023
13th April, 2023

PRECEPT/BUDGET MEETING

12th January, 2023

SPILSBY TOWN COUNCIL COMMUNITY SPEED WATCH

In 2019 Spilsby Town Council decided to form a local Community Speed Watch team.

We have a number of volunteers who have all received training from the Lincolnshire County Council Road Safety team.

We have met on a regular basis and noted that people are beginning to watch their speed as they drive around and through Spilsby.

All drivers who exceed the speed limit are reported to the Road Safety Alliance, who follow this up with the Police.

We have met on several occasions this year, on Halton Road, Partney Road and Boston Road. These have been a great success.

In order to improve this service, we need more volunteers.

You do not have to sign up for specific shift, but if you can be available for one or two sessions each month that would be very helpful.

Full training will be given.

Please contact the Town Council on 01790 753189 for further information.

Cllr Liz Day

Community Speed Watch team.

From your LCC County Councillor



The last two years have been long and uncertain, with ever changing variants of Covid, hopefully we are now seeing the end of restrictions even though Covid is very much still out there so please be careful, but life does feel as though it is returning to a new normal.

Vaccines are still available, and the 4th jab is available to the over 75s and the over 12s who have a weakened immune system.

Highways have put on extra teams to try and catch up with potholes etc and with the latest good weather it is starting to make a difference. There are lots more roads in need of upgrading and LCC continues to fight for more funding from central government.

You can report issues with roads, drainage, streetlighting and fly tipping to name a few on the 'Fix my Street' app, which you can download on your phone or computer, or alternatively call LCC Highways on 01522 782070.

If you would like help with any issues, please contact me on 01754 880388 or email me cllr.w.bowkett@lincolnshire.gov.uk

Cllr Wendy Bowkett

County Councillor for Wainfleet and Spilsby Division.

YOUR LOCAL COUNCIL WHO DOES WHAT?

SPILSBY TOWN COUNCIL	EAST LINDSEY DISTRICT COUNCIL	LINCOLNSHIRE COUNTY COUNCIL
Allotments Cemetery Christmas Illuminations	Markets in Spilsby Housing Advice Homelessness support/prevention	Adult & Children Social Care Births, Deaths, Marriages/Civil Partnerships Bus Pass issue
Grants	Housing Benefits	Children's Centre
Floral Displays Mayoral Engagements Local Plan Street Furniture Play Areas War Memorials Toc H Wildlife area Spinney – Boston Road	Council Tax Collection Council Tax Support Business Rate Collection Wellbeing Service Refuse, Recycling & Green WasteCollections Missed Bin collections Bulky waste collections Street Cleaning on public highways Provide Litter Bins Removing abandoned vehicles Manage council owned trees Fly tipping removal Dog Warden service Provide Public Toilets Waste Enforcement Footway lighting Food safety inspections Emergency Planning Infection disease investigations Nuisance – Odour/smoke/noise/pests (not treatment) Conservation & Listed Buildings Elections & electoral registration Licensing Community Safety Removal of illegal encampments on Council owned land	Disability Support Services Disabled Parking (Blue Badge) Emergency Planning Fostering & Adoption Highways & Transportation - Gritting, Maintaining, Street & Traffic lighting Traffic signs, pot holes, Road markings. Waste & Recycling Disposal - including household waste sites. Libraries including mobile Libraries Heritage sites On Street Parking enforcement School Admissions Free School Meals School Transport (for all schools) Trading Standards Fire & Rescue Emergency Planning Public Heath
Contact details: Tel No: 01790 753189 Email: spilsbytowncouncil@btconnect.com	Contact details: Tel No: 01507 608111 Website: www.e-lindsey.gov.uk	Contact details: 01522 552222 County Offices, Newland, Lincoln LN1 1YL www.lincolnshire.gov.uk

It's the start
of something
special.



It's that **Newton Fallowell** feeling.

We're an estate agency that puts people at the heart of property. Landlords, buyers, renters, vendors... they'll all say similar things. That we know the Midlands like no-one else. That we care more about service. And that while others go through the motions, we'll go the extra mile for every single customer.

Pop in, call **01790 755222**
or search **Newton Fallowell**



A bumper term at Woodlands Academy



This year, Children's Mental Health Week was held between 7th and 13th February. Place2Be launched the first ever Children's Mental Health Week in 2015 to shine a spotlight on the importance of children and young people's mental health. Now in its eighth year, they hope to encourage more people than ever to get involved and spread the word.

For this year's theme, Growing Together, Place2Be were encouraging children (and adults) to consider how they have grown, and how they can help others to grow. Growing Together is about growing emotionally and finding ways to help each other grow. Challenges and setbacks can help us to grow and adapt and trying new things can help us to move beyond our comfort zone into a new realm of possibility and potential. However, emotional growth is often a gradual process that happens over time, and sometimes we might feel a bit 'stuck'.

Pupils from Woodlands Academy in Spilsby got involved and various year groups created two new display boards in school assigned specifically for Mental Health. The pupils all wrote little notes about what makes them happy, and they also created their own handprints in this year's mental health colours, for the display.

Year 7 pupils have been working hard this term learning about the second World War. Being a rural Lincolnshire school, it is essential that we educate our pupils about their local heritage and where they come from, as well as ensuring a high-quality education in their core subjects.

Pupils have enjoyed reading 'Goodnight

Mister Tom' by Michelle Magorian in English lessons, and have been learning about significant events during the second World War in History.

We arranged a visit to East Kirkby Aviation Centre and not only did the children learn about why Lincolnshire is referred to as the 'Bomber County', but they also got to get up close and personal with 'Just Jane', the famous Lancaster Bomber who is a resident at East Kirkby Aviation Centre!

The pupils visited the control tower, the blast shelter, briefing room, billet, and of course the café. The pupils were full of wonder, questions and facts that they had learnt in their lessons at school. They carefully observed maps in the briefing room, with many pupils full of amazement that the village they live in was such an integral part of the war effort as a part of Bomber Command.

The pupils not only took away valuable learning around the war and their local history, but also gained skills in communication and interaction, as well as developing vital social skills. Pupils from 7A class were full of laughter and conversation whilst enjoying a hot chocolate and cookie in the NAAFI. They engaged positively with their peers and members of the public, as well as staff at the Centre. Members of 7B class were really engaging with one of the centre's experienced tour guides whilst being shown around. They were thrilled to be able to go inside the Lancaster Bomber! One pupil was recapping the name of the engines, how many engines a Lancaster had and how the planes were used.

Well done Year 7, your first school trip as part of Woodlands Academy and you have made quite the impression.

Pupils have enjoyed quality time in the school's woodland area during outdoor learning sessions.

The pupils enjoy learning new skills such as confidence building and independence, physical fitness, improved Mental Health and Wellbeing, exposure to manageable risk and empathy for others, better sleep and mood, and team building.

Pupils also brewed up hot chocolate, made Smores and even tried their hand at popping fresh popcorn in the outdoors!

The children then sat around the fire pit reflecting on the school learning, identifying the positives and accomplishments they had made.

The Year 11 photography class have been concentrating on a series of shots called 'Ephemeral' for one of their ongoing projects. The word ephemeral was discussed with the group and decided upon as it describes something that lasts for a very short time.

As part of the project it was crucial that the class researched and visited various locations to ensure the shots would be possible and have the most impact on the viewer. Once they decided upon the locations the photography groups across the school embarked upon completing test shots within the school grounds to see if the idea would actually work and we could get the results that had been discussed. Knowing we were able to capture the images during the tests shots we embarked on the final planning for the shots at St Botolph's Church, Skidbrooke, and Anderby Creek along the Lincolnshire coast.

Pupils visited the locations a number of times to take a series of images but unfortunately things did not go to plan due to the poor weather at both Skidbrooke church and the beach. The adverse conditions caused the cloth to continually blow out of the frame at

the beach and the sun was far too bright at the church. The key to getting the images the pupils wanted was perseverance, knowing it wasn't going to be easy taking into account we needed certain conditions to capture the images.

Over a number of weeks, we continually kept an eye on the weather and having a lucky break, headed back to the Skidbrooke. Once we arrived on location we knew the conditions and light flooding through the windows would be perfect for the shot. The pupils set the equipment up, clearly knowing they only had a short time frame to capture their first images as the light was constantly changing but making the shots interesting. Over fifty images were captured to ensure the best chance of securing the exact shot we had in mind, with the fabric dancing in the air but also captured in freeze motion. The idea was the fabric moves about in the air but stands still as a moment in time and therefore engages the viewer and creates a talking point, not only about the techniques used but also the location of the image and the story behind each image.

Having completed a series of images within the church at Skidbrooke the pupils had the confidence to head back to the Lincolnshire coast to photograph the images on the beach, as you can see the results were so rewarding from a very interesting project that has come together over a number of months.

Having completed a series of shots on two locations pupils still have one more location to shoot which will hopefully happen over the coming months. Once this final shoot is complete we will post the images and look forward to your feedback from our 'Ephemeral' project.



SPILSBY Neighbourhood Policing Team March 2022 Issue



YOUR LOCAL TEAM



Pc Green



PCSO Key



PCSO Blachut

PC Green 07796 688836 daniel.green@lincs.police.uk
PCSO Key 07796 947154 teresa.key@lincs.police.uk

iwona.blachut@lincs.police.uk
southwolds@lincs.police.uk

FORTHCOMING ENGAGEMENTS

The team are busy organising their diary to include a monthly community surgery in your area. Details will be announced on [nextdoor.co.uk](https://www.nextdoor.co.uk).

REPORT CRIME, ISSUES & SPEAK TO US

[Report a non-urgent incident online \(lincs.police.uk\)](https://www.lincs.police.uk)
[Report parking issues to council \(www.lincolnshire.gov.uk/nuisanceparking\)](https://www.lincolnshire.gov.uk/nuisanceparking)

Crime Statistics (Historical)
[Horncastle and Wragby | Police.uk \(www.police.uk\)](https://www.police.uk)
[Spilsby | Police.uk \(www.police.uk\)](https://www.police.uk)
[Woodhall Spa, Coningsby and Tattershall | Police.uk \(www.police.uk\)](https://www.police.uk)

Connect with Lincolnshire Police on [nextdoor.co.uk](https://www.nextdoor.co.uk) for local information regarding your village.

LOCAL PRIORITY

Quarterly priorities:

- ASB
- Fatal4 (Speeding, seatbelts, drink/drug drive, mobile phone)
- E-Scooter

Changes...

These priorities will be reviewed again May 2022.
So make your thoughts known by emailing the team or message on [nextdoor.co.uk](https://www.nextdoor.co.uk).

COMMUNITY UPDATE

Op Raptor

Under Op Raptor, Lincolnshire police welcome the surrendering of firearms and weapons. This has encouraged four firearms and other bladed articles to be taken out of circulation.

Burglary and Theft

Burglaries and theft still blight the area. With daylight hours increasing, everyone must not let their guard down. It's important to check security measures are affordable, achievable and appropriate. This also applies to liquid fuels such as heating oils, diesel, and propane gas cylinders.

Tactical Crime Prevention can be contacted through 101 or email: Crime.prevention@lincs.police.uk

Wildlife

Under Op Galileo, Police have a dedicated team who specifically tackle hare coursing events, however throughout Feb 2022 Wolds Police continued to support Galileo, dealing with reports of hare coursing. Officers attended and responded in a robust manner which moved the suspects on, and out of area.



SPILSBY Neighbourhood Policing Team March 2022 Issue



TikTok

There seems to have been a recent trend on TikTok, where children will knock/kick a stranger's door then run off. Obviously in some cases this will cause a vulnerable person alarm and distress. This type of ASB on the face of it seems harmless, but it can cause the victim lasting long term fear and anxiety.

E-Scooter

May I remind everyone, in majority of Lincolnshire, it is illegal to ride an e-scooter on public land, roads, footpaths, car parks or other public open spaces, unless that is, regardless of rider's age, the rider has valid insurance for road use and a UK driving licence with category 'q'. If stopped, the scooter will be seized and crushed with rider reported for the related offences.

For more information refer to this weblink.
https://nextdoor.co.uk/p/hNCQrgPdJQyz?utm_source=share&extras=MTc1OTIxOTQ3MDAzNjc%3D

Vehicles seized / Fatal4 / Safer Roads

On 27/02/22 two vehicles were stopped by a routine patrol in the Horncastle area. Enquiries revealed that neither car had valid insurance. Both cars were seized and the drivers are being prosecuted. Lincolnshire police have a variety of tactics to deal with traffic offences including mobile automatic numberplate recognition which will detect if your car has no insurance.

24/02/22 South Wolds neighbourhood policing team held a day of action to target the four main factors that contribute to road traffic collisions that result in people being killed or seriously injured. These are the Fatal 4.

- 1) Speeding
- 2) 13366
- 3) Use of a mobile phone
- 4) Drink/Drug driving.

Over four hundred vehicles had their speed checked by officers using handheld speed monitoring equipment. Five people were found to be marginally over the speed limit and were educated with words of advice. Three people were issued with traffic offence reports and one driver was dealt with for document offences. The locations targeted on this occasion were in Coningsby, Gipsy Bridge, Sibsey, East Keal, Wragby, Horncastle, Hemingby, Woohall Spa and Thimbleby. We will continue to target these offences and strive to make Lincolnshire the safest place to live, work and visit.

Officers out conducting local enquiries had their attention drawn to a vehicle. Checks showed the offender had no insurance to drive the vehicle. Driver fled and hid in a shop. A quick word with the passenger and the driver returned to the vehicle where the driver was issued a traffic offence report.

Op Signature

This is a special ongoing operation which identifies and helps vulnerable people who may have been or could be a victim of scam / banking fraud. Some reports are passed to police via Action Fraud, who may have taken the initial report.

This will result in a member of the neighbourhood policing team making a face to face visit to the victim. Fuller details of the crime are obtained, with further safeguarding measures put in place. These could include; a telephone call blocker, 'No Cold Calling' signs, scam awareness packs, alert relative/friends.



WANT TO KNOW MORE

Crime statistics for your neighbourhood are available at www.lincs.police.uk

Find us on
Facebook
Search: Horncastle Police

Follow us on Twitter
Search: @WoldsSthPolice



Nextdoor is a great way of getting the latest relevant information for your area.
Join at: www.nextdoor.co.uk

CrimeStoppers.
0800 555 111
100% anonymous. Always.



Spring 2022

LIVES.

Spring has officially sprung and 2022 has got off to a flying start for LIVES. With the world opening up again it has been a busy start to the year, especially now the nights are starting to draw out a bit.

As well as the army of Emergency First Responders being on call, our new Critical Care Car, Medic 50 was also ready to respond to the most serious 999 medical emergencies on the East Coast. This service was launched in September and is manned by Doctors, Paramedics and Nurses who can take their extended skill set direct to patients up and down the East coast of Lincolnshire.

Medic 50 is dedicated to our coastal area, as major trauma centres are over an hour away by car. This early intervention from skilled medics working alongside East Midlands Ambulance Service has proved invaluable, lifesaving since its launch.

The LIVES Fundraising Team are busy planning the year ahead and are very excited to be booking lots of shows across the county. From Lincolnshire Show to local town shows, the team, supported by local Responders, are there to share LIVES history, the impact we make and give you more information on what LIVES has planned for the future. We



also provide an opportunity to learn bystander CPR and have a hands-on opportunity at learning this lifesaving skill. You will be able to find a list of events that we will be attending on our website in the next few weeks.

We love sharing the work we do and imparting skills in the community. Do you belong to a club or organisation? We would love to hear from you! As part of our mission to share the stories of our amazing Emergency First Responders. We would welcome an opportunity to come to your meeting!

From Lifesaving Equipment, training and even uniform it is all funded by fundraising in the community. We rely on your help, so we can be there when someone calls 999. From running the London Landmarks Half Marathon to taking part in a wing walk, to hosting your own cake sale, or a dress down day at work, we would love to hear from you.

You can get in touch via our social media platforms or by emailing fundraising@LIVES.org.uk or calling **01507 525 999**.

We exist to provide emergency care in critical situations.

To reach people in need and protect life.

It's our reason for being. It's that simple. We treat. We teach.

We get there. We step in when no one else can.

We support our local community and each other.

**To sign up, visit www.LIVES.org.uk
or follow our Facebook page @LIVESHeadquarters.**

SPILSBY GOOD NEIGHBOURS

Do you need help?

Spilsby Good Neighbours can help you with:

Shopping, collecting medication,
a lift to the GP Surgery or Dentist.

Just call: 07716 127186
24 hour answerphone

Leave a message with your name, address and telephone number and we will get back to you as soon as possible.

ALL OUR VOLUNTEERS ARE DBS CHECKED

Tongs of Spilsby
Hardware & Cookshop

Hardware
DIY – Cookshop

1 HIGH STREET • SPILSBY • LINCOLNSHIRE • PE23 5JL

Tel: 01790 752548

SPILSBY LIBRARY IS OPEN

One way Lincolnshire Co-op supports the community is to run vital services, including local libraries. Spilsby Library, located in the food store on Post Office Lane, is one of these. The library, supported by volunteers, has now reopened after lock down closure.

The library is open Monday – Friday at various times between 9am and 5pm, subject to volunteers' availability. Visit <https://www.lincolnshire.coop/community/libraries> for more information. There is also a poster on the library door with opening times.

As well as books and audio books, you'll find a range of information about the local area and what's on in and around Spilsby, together with an extensive range of local history material - some of which you can borrow. Some is only available to view in the library.

There is a section of children's books - on some days the library is open after school.

In addition to browsing, you can reserve, collect, and return books, pay fines, print and photocopy. There's a public computer which can be booked for one hour a day.

There is also a returns box in the food store so you can return books outside opening hours.

Join the library online

Anyone living, working, or studying in Lincolnshire is welcome to join. Membership is free and also enables access to online resources.

Register from home at: <https://prism.librarymanagementcloud.co.uk/lincolnshire/join> Your membership card will be posted to the address provided on the application form.

Alternatively call into the library and a volunteer will issue you with a card and assist you in joining the Library.

Thought of volunteering?

If you can spare a few hours a week, fortnight or once a month, then why not volunteer at Spilsby Library. Contact Rachel Ashmore on (01522) 533316 or rachel.ashmore@lincolnshire.coop for an application form or more information.

Application forms are also available at the library.



BRO PRO UK

Brotherhood Project

The Brotherhood Project and Eve are dedicated to promoting and creating a safe place for men and women to meet, socialise and talk whilst receiving support online and remotely in areas of their lives that they are struggling with. We also provide signposting through a range of mental health & wellbeing services.

**Weekly Sessions | 1:1 Wellness Walks | Group Walks
Access to Counselling | WhatsApp Support Group
Retreats | 1:1 Mentoring | Signposting/Access to
Support Services**

@brotherhoodprojectuk   @eveprojectuk

07939092585



07462447622

Thursdays 7-9pm



Tuesdays 7-9pm



New Life Centre, Church Street,
Spilsby, Lincolnshire, PE23 5DU



Charity Number: 1146916 (Projects within the New Life Community Church Family)

If you are worried about someone's immediate safety/mental wellbeing please call 999 and ask for an ambulance and/or the police.



Eve

Because your journey needs
to start somewhere



Working alongside the First
Coastal & SOLAS
Neighbourhood
Team (NHS)



The Hub is part of
the New Life
Community
Church Family -
Charity Number:
1146916

What can the Wellbeing Hub offer you?

- Drop-in sessions
- Wellbeing Projects
- Community Engagement Events
- Signposting to key mental health services
- Connecting with rural villages and bringing our projects to you
- Access to a Peer Support Worker
- Access to Bro Pro UK (Mens Mental Health)
- Access to Eve (Women's Mental Health)
- Access to Social Prescribing
- Support with doctors and other appointments

And much more!!!

How to find us:

Hub number: 07939092585 (Monday to Friday 9 til 6pm)

Location: Spilsby & District Wellbeing Hub, New Life Centre, Spilsby, Lincolnshire, PE23 5DU

Hours: Monday 10am-1pm, Tuesday 12pm-3pm,
Wednesday 7:30am-3pm, Thursday Community Outreach,
Friday 12pm-3pm

Other Wellbeing Hubs in the area:

Mablethorpe Hub -
Mablethorpe College
01507 473325

Louth Hub - Trinity Centre
07734370873 or
07734370875

If you are worried about someone's immediate safety/mental wellbeing please call 999 and ask for an ambulance and/or the police.

When life is tough,
we're here to listen

SAMARITANS

Call us free 24/7 on
116 123
samaritans.org

Find us on 



Visit Wellbeing Hub Spilsby
& District on Facebook

ageUK Calling all volunteers!

Become a volunteer Visitor Host!

Age UK are looking for friendly people to support our local care homes in having covid-safe visits from resident's loved ones. This is a great role that directly supports the community, and makes a huge difference to the residents of care homes and their wellbeing. You will be fully supported, receive all relevant training and have the chance to develop skills and experience in the health and social care sector.

If you'd like to know more contact

Maddy Hamblett at Voluntary Centre Services for an initial chat by calling 01529 404664 or email maddy@voluntarycentreservices.org.uk

Friends of Spilsby

Would you have some spare time to become a Friend of Spilsby?

We are hoping to start a group of like minded people who would help to look after the various areas within Spilsby. These include the TOC H Wildlife Area, The Spinney on Boston Road and helping with the Spilsby Sparkle Days to litter pick and clean street furniture. This is early days and we are looking for like minded people to help to make our town a more pleasant place to live.

Thank you in advance-Bonny Smith and Elaine Lowe. If there is enough interest, we will hold a meeting.

If you are interested, please email:

friendsofspilsby@gmail.com

or telephone Bonny Smith 07917 820504 for more information.

St James Church - Spilsby Joint Churches Together

*A Celebration to mark the Platinum Jubilee
of the Queen*

*Sunday 5th June, 2022
St James' Church, 3.00pm
Followed by refreshments.*

PLATINUM JUBILEE

FREE EVENT!



PICNIC IN THE PARK

Saturday 4th June 12 to 5pm

AERIAL CIRCUS PERFORMANCES & WORKSHOPS, BOUNCY CASTLE, GAMES & STALLS
FAMILY FUN FOR ALL AGES!



BRING YOUR OWN PICNIC!

**Spilsby Playing Fields,
Ancaster Avenue, PE23 5HL**



Supported using public funding by
**ARTS COUNCIL
ENGLAND**



How is the town's Fire Station and crew performing?

The town's crew have, as ever, been delivering a first rate service to the town and the surrounding communities. The crew have had a slight change in respect to one of the Firefighters who provided split cover with another station has stopped covering at Spilsby, but another Firefighter, who also provided split cover, has moved into the town so is now providing around the clock cover.

So how many incidents has the crew attended between November 2021 and February 2022?

They responded to the following number of call outs

November – 21 calls	December – 6 calls
January – 13 calls	February – 14 calls

As you will see from the figures above, the station had a really busy time in November, within these figures the station attended incidents or provided cover, strategically, around the county 24 times! On these occasions it is important that our Control Room staff have a holistic view of the cover required around the county when there are large incidents in a particular area.

Incidents of note that Spilsby has attended are the large fire at Hemswell Cliff that required attendance of crews over an extended period of time. They also attended a number of incidents during the high winds to make unsafe structures safe.



Do you know a Sherman? If you know anyone in the following groups, please encourage them to refer into Lincolnshire Fire & Rescue for a free Safe & Well check by calling the number below: **Smoker, Hoarder, Elderly, Reduced mobility, Mental health issues, Alcohol or drug dependant or needing care or support.**

CONTINUING TO SUPPORT THE LOCAL COMMUNITY

Spilsby Christian Fellowship (SCF)

FOOD AND SCHOOL UNIFORM BANKS

Spilsby Christian Fellowship, originally the Pentecostal Church, began in Spilsby in the 1940's, building its premises on Halton Road in the 1950's. Even in those early days the church had the needs of its local community at heart, its original constitution which still stands today, states the objects as being...

- A) To advance the Christian Faith**
- B) To relieve sickness and financial hardship, to promote and preserve good health by the provision of funds, goods or services, including counselling and support**
- C) To advance education**

These mirror the example of Jesus - supporting and caring for people in biblical times. As a christian community here at SCF we aim to:- Share 'Jesus' Love and his Light" in a very practical way

Today the world can be seen as a dark place, mental health is at an all-time low and people are often isolated, crying out for friendship, encouragement, financial and practical support, and searching for "something else". We aim to bridge this gap, by providing support groups, activities and our Food and School Uniform Banks.

FOOD BANK

SCF has always offered food support to those in need, over recent years, especially with Covid. This service has grown considerably. Today, unfortunately, many more people are having to rely on food banks. Whilst we are able at SCF we just want to help where we can. Our food supplies come from donations from local families, businesses and schools. Recently, Halton Holgate and Toynton Primary Schools, Spilsby Scouts and Toynton Ladies Group have contributed to our stocks, for which we are grateful. We also work through Neighbourly and Fareshare in partnership with Skegness TESCO, Aldi, Lidl, M & S and Greggs relying on volunteers to collect "surplus" food which would otherwise be wasted and binned as landfill. The items we collect range from "use by" products - passed onto locals with chickens/reptiles, tinned groceries, cleaning products, toiletries, fresh items and miscellaneous ie: four trays of sun tan lotion!! We never know what we might collect and it's quite exciting to unpack a delivery – although sometimes at 10pm at night you don't want to be faced with 4 trays of peppers!!

The amount collected varies – Up to January, 2022 each collection averaged 18 trays allowing us to make up parcels, keep stock and provide a "FREE – Food Trolley". Since March this has dropped to 6 trays depleting our supplies of fresh bread, fruit and vegetables dramatically. We aim to provide the trolley when we can but coupled with increased demand for parcels as energy and petrol bills increase, our main priority is to provide food parcels to those in need.

Food parcels can be requested via facebook, messenger, church email, personal or agency request, or telephone. We provide a confidential service, with a few questions to assess need. We do not operate a referral system, finding many of those in need don't qualify for a referral – eg working families who struggle to meet outgoings, or those facing change of circumstances, unexpected bills or a personal crisis. Generally, food parcels need to be collected from SCF, however this face to face contact is beneficial allowing people to meet with, share concerns, feel listened to and supported and provides opportunities to build friendship and access further help.

SCHOOL UNIFORM BANK

Our school uniform bank is a simpler concept, allowing anyone and everyone to benefit from good condition pre-loved school uniform, reducing household bills and encouraging everyone to do their bit for the environment in terms of reducing wastage, re using and recycling uniform.

We have a vast stock of generic uniform – skirts, trousers, tops, summer dresses, shoes, coats and a variety of logo items for most local primary and secondary schools. We suggest a £1 donation per item (free if needed), which helps fund the continuing work of the church, washing uniform and purchasing low stock items. Like the food bank this is run by volunteers, and open as and when possible. To use the bank please send us a message and we will try to arrange a time for you to pop down and look, or to collect items.

Currently the food and uniform bank amongst other services provided by SCF are self funded, we do not have any grants and rely on the generosity and donations from local people along with the hard work of our committed volunteers.

Uniform and food can be donated at any time, if we are not available in person items can be left in the grey bins on the church doorstep (monetary donations through the letterbox please) - bins are checked regularly.

If however, you would rather leave with us personally, or make a donation via Bacs, please message us via facebook – spilsbychristianfellowship, email spilsbychristianfellowship@live.co.uk or call 01790 752457

LINCS FIRE & RESCUE SPILSBY CREW



Left to Right
Ryan Gilbert – now with Skegness Retained crew.
Andi Skenderaj, Chris Clarke, Steve Murray, Bradley Bushnell, Ben Whitwam, Ray Ford, Andy Lennon, Craig Marchbank,
Simon Goodrick, Bob Green, Chris Toon, Alex Hanson

Classic Garden Services

SERVING SPILSBY AND BEYOND

*grass cutting, general tidying, pruning,
small tree lopping, hedge trimming, major cutting back
and clearance of overgrown areas*

Call Terry: 07368 538099

www.classicgardenservices

FIND US ON FACEBOOK



GET YOUR BUSINESS NOTICED

Take advantage of our advertising packages in the Spilsby Explorer, the Town Council quarterly magazine. This is an ideal opportunity to advertise and promote your business.

1200 copies will be distributed to households and businesses in Spilsby.

£45.00 for a full page per issue

£25.00 for half page per issue

£15.00 per quarter page per issue

REDUCES RATES FOR YEARLY ADVERTISING

REDUCED RATES FOR YEARLY ADVERTISING

To request a space in future issues please contact:

Ros Ford

Deputy Town Clerk

deputyspilsbytc@btconnect.com

Telephone No: 01790 753189

BB SMOOTH

LASER CLINIC

How long is a session?

Depending on the area to be treated, sessions can last from 10 to 45 minutes.

How many treatments will I need?

Every person is unique, however, the average is between 6 to 12 treatments per course.

How long do I have to wait between treatments?

Treatments will be between 4 to 8 weeks apart, depending on the area being treated.

Is laser hair removal permanent?

In the majority of cases laser hair removal permanently removes at least 95% of hair. However, every individual is unique and some people may require top up sessions every 1 to 2 years.

Does it hurt?

Laser hair removal is far less painful than waxing and most people experience little or no pain.

Is it safe?

Laser hair removal is completely safe. A full consultation and patch test will be carried out prior to all treatments to ensure there are no adverse reactions.



FREE CONSULTATION

With a copy of this Ad

Visit www.bb-smooth.com or call us on 07516 124371

Laser Hair Removal by

BB SMOOTH

LASER CLINIC

TREATMENTS FROM £25

- Surprisingly Affordable
- Virtually Pain Free
- All Skin Types
- No More Shaving, Tweezing, Waxing, Plucking
- Be Hair Free in as Little as 6 Treatments

FOR MORE INFORMATION

Call Us / Message Us

07516 124371

Visit Us

Kameo

Nail & Beauty Salon, 18 Market St, Spilsby, PE23 5JT

Find Us Online

www.bb-smooth.com / contact@bb-smooth.com

 [bbsmoothuk](https://www.instagram.com/bbsmoothuk)

 [BB Smooth](https://www.facebook.com/BBSmooth)

St James Church Clock



The PCC are pleased to report that the clock renovation and repairs to the Church clock will be starting in May, 2022. By the end of May we hope to see a vibrant clock face proudly facing the town centre letting townsfolk and visitors know the time.

We still need to raise another £1000 to cover the costs and welcome any further donations towards this. If you can help please send your donation to The Vicarage, Church Street, Spilsby, Lincs PE23 5EF, cheques payable to 'PCC of Spilsby Parish'.

Our next coffee morning celebrates St George's Day on Saturday 23 April from 10am to 12 noon and funds raised will be for the clock appeal. We would love to welcome you there.

Coffee mornings will then be held on the last Saturday of the month until September. The PCC is very grateful to the people and businesses in and around Spilsby for supporting this appeal, without them time would be standing still for quite a while longer.

If you need any further information please contact Spilsby Vicarage on 01790 752526.

SPILSBY RAINBOW GUIDES

Our Rainbow guide meetings are for girls aged 5-7 years. We meet at the Pavilion on Ancaster Avenue every Tuesday during term time, 5.30pm to 6.30pm.

We have a varied programme for the Rainbows including crafts, baking and all sorts of fun and games – some of these are tailored to working towards theme badges.

We have places available from September. To find out more information about Rainbows or to put names down on the waiting list please visit www.girlguiding.org.uk

For further information about Spilsby Rainbows please contact Jackie on 01790 752960 or Claire on 07825 339016.

**LOOK! LEARN!
LAUGH! LOVE!**



Useful Contact Numbers

Emergency Services

Emergency	999
Police non-emergency	101
Spilsby Police Station	01790 752222
NHS Urgent Care	111

Health

Spilsby Surgery	01790 728111
Spilsby Pharmacy	01790 752246
Spilsby Dental Surgery	01790 753243
Pilgrim Hospital	01205 364801
Skegness Hospital	01754 762401

Local Authority

Spilsby Town Council	01790 753189
East Lindsey District Council	01507 601111
District Councillor	01790 763575
Lincolnshire County Council	01522 552222
County Councillor	01754 880388
MP Louth and Horncastle	01507 527017

Education

King Edward VI Academy	01790 753260
Woodlands Academy	01790 753902
Spilsby Primary Academy	01790 752503
Eresby Special School	01790 752441
Halton Holgate CofE Primary School	01790 752575
Partney CofE Primary School	01790 753319
Great Steeping Primary School	01754 830251
Toynton All Saints Primary School	01790 752242
Spilsby Playgroup	07731 444986
Spilsby Children's Centre	01790 753451
Buttons Daycare Nursery	01790 755647
Buttons Kindergarten	01790 755202

Housing and Utilities

Lincs Rural Housing	01790 754219
Platform Housing Group (Waterloo)	0333 2007304
Anglian Water (Reporting Leak)	0800 771881
Flooding - to report flooding	01522 782082
Gas - National Grid	0800 111 999

Community

Franklin Hall	01790 752913
Recreation Ground (Pavilion)	01790 752573
Eresby Hall Care Home	01790 752495

Miscellaneous

Citizens Advice	0345 404 0506
Registration of Births, Deaths, Marriages & Civil Partnerships	01522 782244
Call Connect	0345 234 3344
Community Library	01522 782010
Household Waste Recycling Centres	01522 782070



FRANKLIN HALL - SPILSBY

A COMMUNITY HALL (REGISTERED CHARITY), THE PERFECT PLACE TO HOST SOCIAL AND BUSINESS EVENTS IN THE HEART OF SPILSBY

MAIN HALL

FOR LARGER FUNCTIONS AND ACTIVITIES UP TO 300 PEOPLE.
IDEAL FOR COMMUNITY, CHARITY AND COMMERCIAL EVENTS, CLUBS, CLASSES, SPORTS, WEDDING RECEPTIONS AND PARTIES ETC LARGER MEETINGS, PULL DOWN SCREEN, STAGE AND MICROPHONES AVAILABLE

CONFERENCE ROOM

OFFERS A MEETING ROOM/SMALLER FUNCTION ROOM FOR UP TO 50 PEOPLE.
PULL DOWN SCREEN AND FREE WIFI OFFERING A FRIENDLY AND PROFESSIONAL ENVIRONMENT.

KITCHEN/BAR AND LOUNGE

IDEAL SOCIABLE SPACE TO LINK TO THE ABOVE ROOMS AND ALSO IDEAL FOR SMALLER DINING EVENTS (E.G. COFFEE MORNINGS, LUNCH GROUPS).

Hall Manager's Office generally open Tuesdays 11.15am to 2.15pm
and Thursdays 9.30 to 12.30.

Tel 01790 752913

Email: spilsbyfranklinhall@btconnect.com

Photos and online events diary are available by visiting: spilsby.info/franklinhall