

SPILSBY EXPLORER

AUTUMN 2023



Photograph by John Wood – Spilsby Resident.



SPILSBY TOWN COUNCIL

CONTENTS

MAYOR’S MESSAGE/MEETING DATES 2023/2024	3
ELDC CLLR ELLIE MARSH	5
LCC CLLR WENDY BOWKETT	6
SPILSBY TOWN COUNCIL UPDATE	8
LINCS FIRE & RESCUE	11
SPILSBY TOWN COUNCIL ‘KEEPING WARM’	13
ST JAMES’ CHURCH	18
SPILSBY TOWN COUNCIL AWARDS	18
OLD BOLINGBROKE PARISH COUNCIL	21
RECREATION GROUND REPORT ON NEW DEVELOPMENT	22
SPILSBY ROTARY REPORT	24
SPILSBY CHRISTIAN FELLOWSHIP	26
ROYAL BRITISH LEGION	27
ST BARNABAS ARTICLE	28
SPILSBY SESSIONS HOUSE UPDATE	30

We would very much welcome any suggestions for future editions of the ‘Spilsby Explorer’. Please share any news article. Most importantly please just get in touch, we would really love to hear from you.

The next edition will be published in March 2024.

**If you would like to contribute please contact Spilsby Town Council.
Email: deputytownclerk@spilsbytowncouncil.gov.uk**

MAYOR'S MESSAGE

Welcome to the Autumn/Winter Edition of the Spilsby Explorer.

We have a lot going on in the Town with the Remembrance Day and the upcoming Christmas celebrations coming straight to mind.

On events, I would like to recognize the service of Brendan Bugg, Chair of the Spilsby Show Committee, who has decided to stand down after many years service.

I would also like to recognize all of the volunteers in the town who give their time and energy to made a difference. It can be easy to overlook their efforts and in these difficult times, pulling together as a community is more important than ever.

I hope everyone is enjoying the content we have in the Explorer and if you have any ideas, please contact the office on 01790 753189.

Best Wishes,
Tom Kemp
Mayor of Spilsby



**SPILSBY
TOWN
COUNCIL**

SPILSBY TOWN COUNCIL DATES OF MEETINGS 2023-2024

All meetings to start at 6.30pm unless stated

FULL COUNCIL MEETINGS

Wednesday 22nd November, 2023

December Recess

Wednesday 24th January, 2024

Wednesday 28th February, 2024

Wednesday 27th March, 2024

SPILSBY TOWN EVENTS PRESENTS

SPILSBY XMAS EXTRAVAGANZA

Saturday 2nd December

Santa & Sleigh, fairground rides, stilt walkers,
singers, dancers, 'Festive Fabuloso' stage & more!

Xmas Street Market from 10am

Cracker Day

Franklin Hall from 10am to 2pm

Street Entertainment from 12pm

**Lights switch on
with live band & xmas bangers! 5pm**

**Christmas Tree Festival
St James Church**



HM Government



Supported using public funding by
**ARTS COUNCIL
ENGLAND**

served by One Team
South & East Lincolnshire Councils Partnership

SPILSBY TOWN EVENTS

ELDC Councillor Ellie Marsh

Autumn and Winter can be both an exciting time but also a time when people can start to feel lonely. Daylight hours disappear and are replaced with darkness. We all spend more time inside and less time out and about which means we often see and speak to fewer people.



We are very lucky in Spilsby to have a real sense of community. Please don't feel lonely this Winter. Since I was elected, I have visited lots of places in town where you can go and see a friendly face. Spilsby Christian Fellowship hold a Coffee Morning on a Thursday at 10am, where you will be greeted with a hot drink and some yummy cake. Spilsby Well-being Hub holds a number of sessions including a Ladies "Eve" session on a Tuesday at 7pm and a Men's wellbeing "Bro Pro" session on a Thursday at 7pm. There are lots of nice walks around the town too including the Franklin Trail, details of which can be found on the information board on the outside of the public toilets. Getting out is not only good for your physical health but an excellent way to help improve your mental wellbeing. Walking is also free and a great way of meeting new people. Spilsby and Hundleby Walkers have leaflets of what they do available in the library at the Coop and via their Facebook page

There are lots of Community Events taking place in December, including Spilsby Fire Station who will be doing their annual "Santa Sleigh" through Spilsby, date to be released soon. Santa and his band of Firefighter Elves will be pleased to see you all.

Councillor Grants are available for groups in the Town. Please contact me for more information.

Here's to a community spirited Winter and a Happy 2024.

Ellie
07969862982
Ellie.marsh@e-lindsey.gov.uk

Lincolnshire County Councillor Wendy Bowkett

Eresby Avenue and Ancaster Avenue will be resurfaced at the end of October, we will then look at the parking issues and how the area can be made safer.

Council have agreed to give a further £10 million to highways to use on our rural roads this is in addition to a previous £7 million, this has come from underspends in other areas, this is certainly good news and I have already put forward some roads in my ward.

The area around Ashby Road has been raised again with problems during the school run, with cars parking and parents trying to cross the road. I have asked the Road Safety partnership to look at the area and see how we can try and alleviate the issues.

There is a programme underway for many of the paths to be micro surfaced around the town, unfortunately this cannot be done to the Boston Road path which needs full reconstruction, I am awaiting confirmation when we can put this in the highways programme.

Covid and flu vaccinations are now available, and I know Spilsby has already held a clinic, if you are over 65 or have a weakened immune system then please call 01522 301940 to arrange an appointment.

Please get in touch with any issues you may have.

Wendy

Email: cllrw.bowkett@lincolnshire.gov.uk

Phone: 07917494478

Cllr Wendy Bowkett

Executive Member for Adult Care and Public Health

Lincolnshire County Council

Wainfleet and Spilsby Ward

It's the start of something special.



It's that **Newton Fallowell** feeling.

We're an estate agency that puts people at the heart of property. Landlords, buyers, renters, vendors... they'll all say similar things. That we know the Midlands like no-one else. That we care more about service. And that while others go through the motions, we'll go the extra mile for every single customer.

**Pop in, call 01790 755222
or search Newton Fallowell**





SPILSBY TOWN COUNCIL

SPILSBY TOWN COUNCIL UPDATE

COMMUNITY ALLOTMENTS

Hundleby Road, Spilsby, PE23 5LP

The Town Council manage 39 Allotments on this site. There are currently 5 vacant plots, all varying in size, available to residents within a 5-mile radius of Spilsby.

Please contact the Town Clerk 01790 753189 if you are interested in any of the vacant allotments.

PLAY AREA

The Town Council have plans in place to refurbish the play area on Boston Road Recreation Ground.

We are currently working with the National Lottery Community Fund, and hope to be successful with our application. There are other funding applications ongoing, which will, if successful, be added to £50,000 that the Council have budgeted for the year 2023/24.

Local businesses have been contacted and invited to make a donation towards the cost.

We are extremely grateful to J&A International and GPC Industries Ltd, of Spilsby, who have already donated to the project. Local residents are very welcome to visit us here at the Franklin Hall, Halton Road, Spilsby to view the proposed plans and give their feedback/comments.

FLORAL DISPLAYS

The Town Council have re-set 20 planters and 12 barrier baskets with winter bedding plants, adding some colour and interest to the town centre.

COMMUNITY SPEEDWATCH

Community Speedwatch Sessions were carried out by our trained volunteers on the 3, 4 and 6 October 2023 at the usual hotspots of Ashby Road, Boston Road and Halton Road. Letters have been sent to all those who were caught exceeding the Speed Limit of 30mph. Further speedwatch sessions will be carried out when the weather allows. The Community Speedwatch group need volunteers, if you're interested and would like to help, please contact the Town Clerk.

ROSE GARDEN

New benches have recently been installed in the Rose Garden opposite Sainsbury's Supermarket on Boston Road and winter flowers are now in the pots. Is there anything else that you think could be added to this area to make it more appealing? If there is, please contact the Town Clerk.

COUNCILLOR VACANCIES

Spilsby Town Council currently has three vacancies. If you would like to make a difference in your community and become a Town Councillor, please contact the Town Clerk for more information and an application form.



SPILSBY TOWN COUNCILLOR'S

Left to Right: Cllr Tom Kemp (Mayor), Cllr David Mangion, Cllr Liz Day (Deputy Mayor)
Cllr Max Gibson, Cllr Alan Day, Cllr Terry Taylor, Cllr Lee Marsh.

Not present: Cllr Michael Wragg, Cllr Bill Rose.

Classic Garden Services

SERVING SPILSBY AND BEYOND

*grass cutting, general tidying, pruning,
small tree lopping, hedge trimming, major cutting back
and clearance of overgrown areas*

Call Terry: 07368 538099

www.classicgardenservices

FIND US ON FACEBOOK



Tongs of Spilsby
Hardware & Cookshop

Hardware
DIY – Cookshop

1 HIGH STREET • SPILSBY • LINCOLNSHIRE • PE23 5JL

Tel: 01790 752548

HOW IS THE TOWN'S FIRE STATION AND CREW PERFORMING?

Fortunately, this summer hasn't witnessed those record breaking temperature levels of last year that resulted in Lincolnshire Fire & Rescue declaring a 'Major Incident' due to the stresses placed upon it due to the high volume of 999 calls, and the number of incidents requiring multiple appliances for an extended period of time. However, August was a busy month for the crew with 32 calls (average 1 per day) that included some multi-pump incidents in Leverton, Burgh Le Marsh, Benington and Skegness.

If you feel you could be a part of the crew, why not pop down to the station during their drill night on a Thursday evening from 7pm.

So how many incidents has the crew attended between February 2023 and May 2023?

They responded to the following number of call outs

June – 14 calls

July – 22 calls

August – 32 calls

Important Fire Safety considerations as we get close to Winter.

Have you had your chimney swept? Have you had your boiler serviced?

Never leave candles, including fragranced ones and wax melts, unattended!

Do you know a Sherman? If you know anyone in the following groups, please encourage them to refer into Lincolnshire Fire & Rescue for a free Safe & Well check by calling the number below:

Smoker, Hoarder, Elderly, Reduced mobility, Mental health issues, Alcohol or drug dependant or needing care or support.



If you have any fire safety concerns in your home please contact the team at

Grantham Fire Station on 01476 565441

If you want to join the crew at Spilsby please ring the recruitment line on 0800 3580 204

You can follow Spilsby Fire Station and the crew on Facebook or Twitter



www.facebook.com/spilsbyfire



[@spilsbyfire](https://twitter.com/spilsbyfire)



CARPET DRY CLEANING

A DEEP DOWN DRY CLEAN FOR YOUR CARPETS & RUGS

IMMEDIATE USE AS SOON AS CLEANED!

NO COLOUR RUN!

NO SHRINKAGE!

UPHOLSTERY, INCLUDING LEATHER, ALSO CLEANED!

SUBSTANTIAL BENEFIT TO ASTHMA SUFFERERS!

CONTACT BRYAN ON:

01790 763040 OR 07766 576381

OR EMAIL AT:

nickydaish@btinternet.com

Spilsby Town Council's Top Tips for keeping warm over the winter months.

WHEN GOING OUT

- Make sure you wear plenty of layers, many layers are better than fewer or even one thicker layer, as thin layers trap heat between them. Especially if you might not be home before the sun goes down, the temperature drops rapidly after sunset.
- Wear a hat, heat is lost through your head so wearing a hat can reduce the heat loss.
- Gloves made of wool, leather or synthetic material with insulating properties will help prevent heat loss. However, be aware that wet gloves will make you lose heat quicker, so have a spare pair of gloves with you. Gloves should also be loose fitting, tight gloves will not hold the heat in.
- Don't have any gaps, gaps between sleeves and your gloves will allow the cold in, and having your coat open again will let the cold in. Having a coat with a Velcro flap will help prevent the cold getting in.
- Wear dry shoes, keep your shoes dry as this will help keep your socks dry and stop you feeling cold.
- Socks should be wool or have insulating properties like gloves when you go out.

WHEN YOU'RE AT HOME

- Still wear plenty of thin layers, rather than one thick layer.
- Keep active in your home to generate heat.
- If you are sitting for periods of time, wear a blanket to provide extra warmth.
- If your fingers or hands feel cold, give them a wiggle to stimulate blood into your extremities.
- Don't have bare feet, wear socks and slippers.
- Service your boiler, a well maintained boiler will be up to 20% more efficient.

WHEN YOU'RE IN BED

- If you need to, wear socks in bed.
- Use a hot water bottle, wheat bag or electric blanket to warm your bed before you get into it. However, never use a hot water bottle and an electric blanket at the same time!

HEATING YOUR HOME ON A BUDGET

- Only turn on the radiators in the rooms that you are using.
- Turn your thermostat down a degree or two but have it ticking over rather than trying to use more energy to get your home up to temperature.
- Close your curtains at night to prevent heat loss through the glass, and tuck curtains behind the radiator to stop it being trapped between the curtain and window.
- Make sure you are registered for Winter Fuel payment if you are entitled. Once registered you will receive it each year without having to re-apply.
- Cold Weather payment, if the temperature is at or below 0C for a period of 7 days and you are receiving certain benefits, you could be entitled to £25 per week.
- Warm Home discount, if you receive Pension Credit or on a low income you could be entitled to a discount on your electricity bill.
- Cost of Living Benefit, these are one-off payments for households on means-tested benefits, such as Pension Credit and Universal Credit.
- Budgeting Loans, if you're receiving Pension Credit, Income Support, income-based Jobseeker's Allowance or income-related Employment and Support Allowance, you may be able to get a Budgeting Loan to help with unexpected expenses. If you're receiving Universal Credit you may be able to get other financial support. Keep warm.

Don't forget to check which premises are offering warm spaces this winter for you to keep warm.

To redeem this offer you must present this flyer on your first visit. This offer may not always be available when joining online, but can be redeemed via phone or in person.
This offer cannot be used in conjunction with any other offers. Please see our website for all current offers.

VFitness

MORE THAN JUST A GYM

- ✓ PERSONAL TRAINING
- ✓ MODERN GYM
- ✓ WEIGHT LOSS
- ✓ FITNESS CLASSES
- ✓ NUTRITION
- ✓ WELLNESS
- ✓ TANNING



BRING THIS FLYER TO GRAB
YOUR 1/2 PRICE JOINING FEE



01790 751200



WWW.VFITNESS.CO.UK

VALE ROAD, SPILSBY, LINCOLNSHIRE, PE235HE

VFitness
MORE THAN JUST A GYM

FRIDAYS
10:30AM

LINE DANCING

☎ 01790 751200
🌐 www.vfitness.co.uk
📍 Vale Road, Spilsby
📱 [vfitness.stronger](https://www.facebook.com/vfitnessstronger)



CLASSES

MONDAYS
7PM

BURN 45

☎ 01790 751200
🌐 www.vfitness.co.uk
📍 Vale Road, Spilsby
📱 [vfitness.stronger](https://www.facebook.com/vfitnessstronger)



TUESDAYS
7PM

YOGA

☎ 01790 751200
🌐 www.vfitness.co.uk
📍 Vale Road, Spilsby
📱 [vfitness.stronger](https://www.facebook.com/vfitnessstronger)



THURSDAYS
9:30AM

LEGS BUMS & TUMS

☎ 01790 751200
🌐 www.vfitness.co.uk
📍 Vale Road, Spilsby
📱 [vfitness.stronger](https://www.facebook.com/vfitnessstronger)



SATURDAYS
9AM

HIIT

☎ 01790 751200
🌐 www.vfitness.co.uk
📍 Vale Road, Spilsby
📱 [vfitness.stronger](https://www.facebook.com/vfitnessstronger)



TUESDAY
6:00PM

SPINSANITY

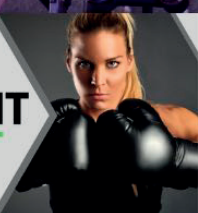
☎ 01790 751200
🌐 www.vfitness.co.uk
📍 Vale Road, Spilsby
📱 [vfitness.stronger](https://www.facebook.com/vfitnessstronger)



WEDNESDAYS
6:30PM

BOXFIT

☎ 01790 751200
🌐 www.vfitness.co.uk
📍 Vale Road, Spilsby
📱 [vfitness.stronger](https://www.facebook.com/vfitnessstronger)



FRIDAYS
6:30PM

NON-STOP SPIN

☎ 01790 751200
🌐 www.vfitness.co.uk
📍 Vale Road, Spilsby
📱 [vfitness.stronger](https://www.facebook.com/vfitnessstronger)



MONDAY
9TH OCTOBER
6:00 PM

ONE-OFF SPECIAL CLUBBERCISE

☎ 01790 751200
🌐 www.vfitness.co.uk
📍 Vale Road, Spilsby
📱 [vfitness.stronger](https://www.facebook.com/vfitnessstronger)





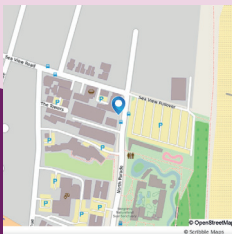
Our Wellbeing Hubs provide a safe and supportive space for those experiencing mental health and wellbeing challenges.

We can signpost you to other services in the local area, help you build social networks and develop the knowledge and skills to manage your mental health and improve your wellbeing.

Here Are Just A Few of the Groups We Run:

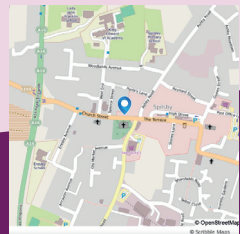
- Daily drop-in sessions with our Connectors
- Weekly/monthly sessions at our satellite hubs
- Craft workshops
- Recovery support
- Music communication/singing group
- Peer led support groups
- Memory Cafe (Dementia Support)
- Early Bird breakfast club
- Bro Pro UK (Men's mental health support)
- Eve (Women's mental health support)
- Skegness & Spilsby Night Light Cafe

Your Wellbeing Matters, Start Your Journey Today



◀ Skegness Wellbeing Hub, The Storehouse, North Parade, Skegness PE25 1BY

Spilsby Wellbeing Hub, New Life Centre, Church Street, Spilsby PE23 5DU ▶



Michael Lithgow
(Skegness Community Connector)
m.lithgow@nhs.net, 07493266569



For more information
call or message our Community Connectors,
or find updates on our social media

Suzy Pearl
(Spilsby Community Connector)
suzy.pearl@nhs.net, 07901211220

H.A.Y. helps people find local resources for mental health and wellbeing. www.haylincolnshire.co.uk



Night Light Café's exists to provide a safe space, a listening ear & some company in the evening for people (18+) who are experiencing a crisis with their mental health. It's OK not to be OK But not everyone knows that.

Night Light Café Spilsby

Wellbeing Hub
New Life Centre
Church Street
SPILSBY
PE23 5DU

To book a visit call 07901211220



@nightlightcafespilsby

For more locations email: nightlight@actstrust.org.uk

St James' Church, Spilsby



It is that time of year when St James' Church gets visibly busier – we are busy all the time, but around Remembrance and Christmas there are extra calls on our time. It is always great to see the community come together whether in solemnity or in celebration.

This year, plans are well under way for a Christmas Tree Festival in St James Church throughout December. There will be a trail for families to follow, and all of our local schools are being asked to contribute by decorating stars. Will you be able to spot yours?



In addition to visual excitement, what about the music? Ranging from the lone bugler playing the last post at the War Memorial to a Silver Band Concert, Choral singing and Community Carol Singing, there really is something for everyone at this time of year.

Look out for the posters going up around town or on community Facebook pages. We look forward to welcoming you.

Rev Fran,
Team Rector

Spilsby Town Council are planning on holding a Spilsby Town Recognition Award Ceremony. It is to award those individuals, groups and businesses in the town that have gone above and beyond for the betterment of the town and the community.

We would like to hear from you, on how you think this should be structured and suggestions on the categories for the Recognition Awards?

Some of the questions we would like you to answer are:

1. Would you like to attend an event like this?
2. Would you prefer the event to be held on a Saturday or Sunday?
3. What time of day would you prefer, morning, afternoon or evening?
4. Where would you like the event to be held?
5. Would you like to hear the recipients talk to the audience about why they have been recognised?
6. What categories would you like to be considered?
7. Are there any other suggestions you would like to be considered for the event?

Please email your responses to lee.marsh.stc@gmail.com

Christmas by Candlelight



Come and join us for an evening of
Music for Christmas
in

St James Church, Spilsby

1st December, 7pm

with Alford Silver Band and Halton Hoglegate School Choir-

REFRESHMENTS AVAILABLE

Retiring collection in aid of the church clock restoration fund.

The Hundleby Inn

20th November 7pm

Dying for Chocolate



£20 p.p.

Includes lasagne supper

Call 07368 538526 to book

Old Bolingbroke - Past, Present and Future



Old Bolingbroke may be small but it holds a huge place in the history of the United Kingdom. Many people both local and from further afield visit regularly to enjoy its tranquil setting at the foot of the Wolds. Not only are there the ruins of the castle resting gently in their cushion of grass, but also St Peter and St Paul's Church, another victim of the Civil War, smashed to only one third of its original size, and then the very picturesque village. Quite a number of the older properties owe their existence to the castle stone.

The castle and its grounds are part of the Duchy of Lancaster, so are owned by the Royal Family.

Henry the IV, son of John of Gaunt and his first wife Blanche, was born there. Geoffrey Chaucer, brother in law to Henry by his third marriage, and if you're a bell ringer, Richard the II grew up there with Henry, there is so much to know!

The great news is that thanks to enthusiastic residents the village is thriving in the 21st Century. The church hosts regular events as well as its schedule of services, often accompanied by delicious locally made cakes, and if you're a bell ringer, the team meets regularly every Wednesday night. Ramsden Village Hall is fast becoming an extremely popular venue both for social events and club meetings as well as classes;

its monthly lunches hosted by the Lunch Club Ladies are always fully subscribed. Current custodians of the village history are the Friends of Bolingbroke Castle, supported by a rich pool of knowledge and records maintained by village residents and Heritage Lincolnshire. This year they hosted a fantastic reenactment weekend in August that included knights, their dancing ladies, archers, falconers, medieval cooks, a blacksmith, a medieval spice merchant and a magnificent white charger, opening a window on the past enjoyed by all.

In the next edition of the Explorer we will give dates for events planned during 2024, but in the meantime for more information please use the contact details below:

St Peter & St Paul Church,
Church Lane at Moat Lane
01790 752526
bolingbroke.church@gmail.com

Ramsden Village Hall
01790 763363
ramsden.hall@btinternet.com

Friends of Bolingbroke Castle
01790763550
friendsofbolingbrokecastle@gmail.com

Spilsby Recreation Ground Developments

The Pavilion Committee are ambitious and excited to announce some extensive plans that are due to take place between 2023 and 2026. Three community engagement sessions identified the needs of the community, and these will be put into action over the next three years.

Spilsby Recreation Ground Development – 2023

As part of the development for the Recreation Ground, the trustees will look to upgrade and improve many of the facilities. This will be completed in four phases.

PHASE 1 – Ground Improvement (2023)

The Recreation Ground Committee has successfully obtained a grant, with the help of Lincolnshire FA to improve and manage the Recreation Ground. This will include the purchase and maintenance of the grassed area. We will manage and control our own groundwork in order to allow quicker, ad-hoc cutting, as well as improvement of the overall turf.

PHASE 2 – Multi-Use Hardcourt & Skate Park (2024)

Phase two is in the latter stages of planning. In 2024 we will start development of a multi-use Hardcourt to replace the current derelict space. The surface will be state of the art 2G, to allow for multi-sport and multi participation, including Football, Tennis, Basketball, Netball and Padel. Alongside will feature a new multi-use skate park, for Skating, Scooting, BMX's and Roller Blades. This will be incorporated into a landscaped area for family enjoyment.

PHASE 3 – Carpark (2024)

We will increase the size of the carpark to accommodate the increased volume of vehicles using the newly positioned sporting facilities, while also servicing the increase in football related traffic.

PHASE 4 – Pavilion Improvements (2024-2025)

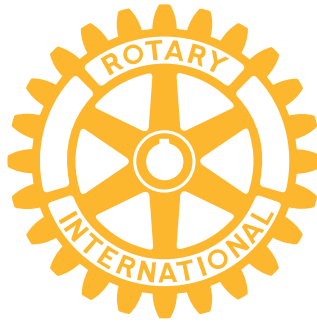
We will invest in an improved Pavilion to cater for many new sports and also accommodate newly introduced football related conditions. These will include new state of the art integrated changing rooms, referee rooms, a second hall for sporting fitness, outside toilets, solar panels, a clubhouse/café and a patio area for sporting enjoyment. All these improvements will increase revenue for the site while also offering more usage time, potential football enhancement in the league, better toilet facilities and safeguarding requirements, and employment opportunities for the local community.





If you would like to offer your help, and be part of the future plans for Spilsby, or if you'd like more information, please contact us via our Facebook page @ [spilsbyrecreationground](#)





ROTARY CLUB OF SPILSBY

Autumn is a busy time for members of Spilsby Rotary Club with preparations to be made for Bonfire Night, Cracker Day and the annual carol concert.

The club once again agreed to pay for the firework display on the Boston Road playing fields on 5th November and to run the event as in previous years.

Then the focus moves on to Cracker Day on 2nd December at the Town Hall. This event has grown in popularity with an abundance of stalls packed with Christmas gifts and, as always, there will be a visit from Father Christmas. Carol singing by local schoolchildren was a big draw last year and Spilsby Rotary Club hopes to add another choir this time.

The club will be going 50/50 with Spilsby Town Council to meet the cost of the Christmas tree and will be erecting it as usual near the statue of Sir John Franklin and decorating it with lights. Rotarian Charles Tong of Tong Engineering provides the equipment to lift the tree into place.

Rotarians will also be assisting at the annual carol concert at St James's Church, Spilsby, on 8th December and will be selling raffle tickets with star prizes ahead of the event. Any local businesses are welcome to donate prizes.

The club meets most Thursday evenings at the Nelson Butt in Spilsby and recent talks have covered a wide range of topics including life as a police patrolman, a virtual walk through the City of London, Morris Minors and taxidermy.

Visits have been paid to Mareham le Fen Bowls Club, where members picked up tips on this quiet, leisurely pursuit, and, in contrast, to the crash bang wallop of stock car racing at Skegness Raceway.

Popular Partney driving instructor Neil Blanchard took over as President in July after a highly successful year led by John Mitchell and he has already welcomed the club's second female member, Tracey Robson.

New members are always welcome. Contact Neil at neil.mags.1991@btinternet.com or secretary Richard Richmond at richardrichmond62@gmail.com.

www.spilsbyrotary.org



Picture caption: Tracey Robson is inducted into Spilsby Rotary Club by President Neil Blanchard, with her sponsor Ian Steltner looking on.

SPILSBY GOOD NEIGHBOURS

Do you need help?

Spilsby Good Neighbours can help you with:

Shopping, collecting medication,
a lift to the GP Surgery or Dentist.

Just call: 07990 554262

24 hour answerphone

Leave a message with your name, address and telephor...
number and we will get back to you as soon as possible.

ALL OUR VOLUNTEERS ARE DBS CHECKED

Spilsby Christian Fellowship

Although Christmas is generally the busiest time of the year for us here at Spilsby Christian Fellowship, our normal face to face groups continue, listed below, and we'd love to extend a warm invitation for you to join us.

Come & Play Tots on a Monday and Wednesday 10:00 - 11:30

Baby Group on a Tuesday 10:00 - 11:30

Coffee, Chat 'n' Cake on a Thursday 10:00 - 11:45

Friday Evening **Youth Sessions**
18:00 - 19.15 for primaries,
19.30 - 21:00 for secondaries

And our weekly **Sunday Services** at 10:30

We are expecting an increased demand for food parcels and anticipate more families may turn to us for help with school uniforms, baby products, household items, and clothing, as heating is turned on and household bills rise.

We are grateful to those organisations and individuals who have supported our food stocks recently. We'd like to say thank you to the local groups, businesses and many individuals who donate home grown produce, who make financial contributions, and who support us with their time and energy.

Our aim here at Spilsby Christian Fellowship is to support where we can. We aim to be friendly, non-judgmental, easily accessible and will deal with your situation confidentially, to the best of our abilities - so if we can help you, please call in. Additionally, if you can help us, maybe with a few hours volunteering once a week please contact us.

We have lots planned for the Christmas Season and in the run up these will include -

Christmas Jumper/outfit Rail which will be available at the church from Monday 20th



November. Please donate any pre-loved Christmas jumpers or outfits you no longer require; these will be sold on to raise money for our Stocking Appeal.

Christmas Sale on Saturday 25th November 10:00 - 12:00noon. During this sale, we sell new items suitable for gifts, as well as Christmas items. Funds raised help our Stocking Appeal.

Christmas Cracker Family Craft Day on Saturday 2nd December. Over 18 tables set up with craft resources including: table and tree decorations, other gifts and foods, all to make it and take it away with you. This event is subsidised by the church, but there is a small charge of £3 per person taking part in the crafts.

Christmas Nativity is on Sunday 17th December at 10:30 in the church. A fun event, with children dressing up as nativity characters. There will be a re-telling of the nativity with songs, carols, readings and more.

We would be grateful if you could help with our Christmas Stocking Appeal. Gifts can be brought to the church or message me to discuss a convenient drop off time. Alternatively, donations towards the Stocking Appeal or work we do can be made by BACS, please contact us for details.

We hope this year you will join with us and help support the work we do in the community. If you want to find out more, please contact us via facebook, or email at spilsbychristianfellowship@live.co.uk or call us on 01790 752457.



THE SPILSBY LEGION NEEDS YOU

The Spilsby branch of the Royal British Legion is again reaching out to the people of Spilsby and the surrounding district to help us in continuing the work we do to keep the spirit of Remembrance alive and to help with the annual Poppy Appeal.

We are asking for people to join the Legion and help us with these roles. It is no longer necessary for members to have served in the forces community; all that's needed is a willingness to help out with the branch's important annual commitments.

Active members are now becoming thin on the ground and staging new events ever more difficult without willing hands to help plan and manage them to the standards the town has come to expect. Past events have included a



musical evening and 100th anniversary concert both held at the Franklin Hall as well as murder-mystery and quiz evenings at the Hundleby Inn. We also have annual commitments such as the parade at the Spilsby Show (pictured above).

The cost of membership is a very reasonable £18 per year. Full details on how to join can be found on the Legion's website britishlegion.org.uk or phone 0800 307 7773 (free). You can also contact the branch's chairman, Denis Chandler, on lcdgraphic@aol.com or telephone 07873 360258 if you need further information.



St Barnabas Hospice is a local independent charity and every year we support more than 12,000 people across Lincolnshire affected by a life-limiting or terminal illness.

We offer services across Lincolnshire in Boston, Grantham, Lincoln, Louth, and Spalding. We can help patients, family members, friends, and carers with emotional, psychological, spiritual, financial, and social needs.

Our Louth Wellbeing Centre lies on Grimsby Road and acts as a welcoming environment for support groups, counselling and bereavement support and medical appointments.

We have the below groups and activities running in Louth. These are free to attend for everyone, including those without a patient connection to St Barnabas. No booking is required.

- Creative Wellbeing Group – Every Tuesday from 10am to 12pm
- Drop In Coffee Morning with singing sessions – every Thursday, 10am – 12pm

Run, dance, or prance a little festive cheer with St Barnabas Hospice

If you are looking for a way to have some festive fun whilst making a difference to those in your local community this Christmas, why not support your local Hospice by taking part in Rudy's Run. This event is perfect for primary schools, sports groups, and

community groups.

Pick a date of your choice for you and you pupils to run, dance or prance as they take part in your very own Rudy's Run whilst raising vital funds for Hospice care in Lincolnshire.

It is completely FREE to sign up and will provide everything you need to take part: Rudy's accessories, letters to send to parents, a guide to set up Just Giving, and an activity pack.

This year our activity pack is better than ever, filled with fun festive crafts for all the children!

Get in touch and find out more, contact us fundraising@stbarnabashospice.co.uk or 01522 540 300

www.stbarnabashospice.co.uk/rudysrun/

Torchlight Procession

On Tuesday 21st November, hundreds of people will come together in the historic uphill area of Lincoln for the annual St Barnabas Hospice Torchlight Procession, as part of the Light up a Life campaign in remembrance of loved ones.

The Procession will be led by the RAF Waddington Pipe band, with supporters holding flaming torches and light-up lanterns. Together, they will walk the route from Clayton's Sports Ground to Lincoln Cathedral, creating a beautiful atmosphere.

As is tradition for the Procession, a brief stop will take place at the Hospice's Inpatient Unit on Nettleham Road. Patients, staff, and volunteers will then be able to enjoy this emotive display from the comfort of the Hospice building.

Attendees will be able to write Messages of Love and tie them to the railings of the 30-foot Tree of Life outside Lincoln Cathedral, sending a special message to the loved ones they will never forget.

The Torchlight Procession is free to attend, however we do ask that you book your place as well as purchase torches and lanterns in advance of the event (extra lanterns and torches will be available to purchase on the

evening). Tickets will be available from 1st November on our website.

Before the event, St Barnabas are encouraging members of the community to dedicate a light in the name of a loved one lost through their Light up a Life appeal and these dedicated lights will shine brightly on the Tree of Life.

This appeal will stay open throughout the whole festive period, with supporters receiving a personalised handwritten card, a star-shaped tree decoration and a digital tribute to share on their social media pages to spread the word about their dedication. To dedicate a light, visit: <https://stbarnabashospice.co.uk/light-up-a-life>.



**SPILSBY
TOWN
COUNCIL**

Advertise in the Spilsby Explorer Magazine

GET YOUR BUSINESS NOTICED

This is a great opportunity to advertise and promote your business in the local community by advertising in the Spilsby Explorer magazine, issued by Spilsby Town Council.

1500 copies are delivered to every household and businesses in Spilsby.

£45.00 for a full page per issue

£25.00 for half page per issue

£15.00 per quarter page per issue

Discounts available for advertising for a full year.

**To request a space in future issues please contact:
email: townclerk@spilbsbytowncouncil.gov.uk Tel: 01790 753189**

You might have noticed the grand “clear out” operation, which volunteers have recently been undertaking at Spilsby Sessions House. The

Spilsby Sessions House



building has had to be cleared to

facilitate a full measured survey, which will be used for the detailed design work that's required in the next stage of the regeneration project.

Scaffolding has also been erected for temporary emergency repairs that are now underway, funded by Historic England. Comprising repairs to roofs and drainage, these works are essential to prevent further deterioration of the building.

Spilsby's Sessions House Project (SHP) is one component of a successful bid by East Lindsey District Council (ELDC) to central government's Levelling Up Fund (LUF), which has resulted in an award of £4.9m for Spilsby's project. The SHP team is now working in partnership with ELDC to bring to fruition the full, long-term project to transform the building into a cultural community facility. The SHP team has worked with Tim Ronalds Architects (TRA) for several years on the development of plans for a sympathetic renovation of this historic icon. Whilst retaining the building's integrity, the vision is to provide a facility fit for the twenty-first century. Over the next few months, SHP / ELDC will be working closely with TRA on the details of the design and submitting the necessary planning applications, before construction work on site can begin. It is now expected that the project will be completed by March 2026.

Meanwhile the 'SessionsArts' programme is supporting the **Spilsby's Xmas Extravaganza** on Saturday 2nd December, as part of the **Festive Fabuloso** tour of East Lindsey market towns, and also **Spilsby Light Night** which is returning on Saturday 17th February 2024.



The SessionsArts programme is funded by the UK Government through the UK Shared Prosperity Fund and by an Arts Council England National Lottery Project Grant.

For more information please visit our website at www.thesessionshouse.org.uk (which we will be updating over the next few months).

SAVE THE DATE



SPILSBY LIGHT NIGHT

Saturday 17th February 2024

Produced by



Supported using public funding by
**ARTS COUNCIL
ENGLAND**

served by One Team

South & East Lincolnshire Councils Partnership



HM Government



FRANKLIN HALL - SPILSBY

A COMMUNITY HALL (REGISTERED CHARITY), THE PERFECT PLACE TO HOST SOCIAL AND BUSINESS EVENTS IN THE HEART OF SPILSBY

MAIN HALL

FOR LARGER FUNCTIONS AND ACTIVITIES UP TO 300 PEOPLE.
IDEAL FOR COMMUNITY, CHARITY AND COMMERCIAL EVENTS, CLUBS, CLASSES,
SPORTS, WEDDING RECEPTIONS AND PARTIES ETC LARGER MEETINGS,
PULL DOWN SCREEN, STAGE AND MICROPHONES AVAILABLE

CONFERENCE ROOM

OFFERS A MEETING ROOM/SMALLER FUNCTION ROOM FOR UP TO 50 PEOPLE.
PULL DOWN SCREEN AND FREE WIFI OFFERING A FRIENDLY AND
PROFESSIONAL ENVIRONMENT.

KITCHEN/BAR AND LOUNGE

IDEAL SOCIABLE SPACE TO LINK TO THE ABOVE ROOMS AND ALSO IDEAL FOR
SMALLER DINING EVENTS (E.G. COFFEE MORNINGS, LUNCH GROUPS).

Hall Manager's Office generally open Tuesdays 11.15am to 2.15pm
and Thursdays 9.30 to 12.30.

Tel 01790 752913

Email: spilsbyfranklinhall@btconnect.com

Photos and online events diary are available by visiting: spilsby.info/franklinhall